



Network Camera

User Manual

Version: V7.1.21.5

Statement

Thank you for purchasing our product. If there are any questions or requests, please do not hesitate to contact the dealer.

This manual applies to network camera.

This manual may contain several technical incorrect places or printing errors, and the content is subject to change without notice. The updates will be added to the new version of this manual. We will readily improve or update the products or procedures described in the manual.

Legal Disclaimer

- Should any reasons below cause the product destroyed or service stop, we will assume no responsibility for your or third party's personal injury and property loss: ① No installation or use according to instruction strictly. ② For sake of state-building maintenance or public interest. ③ Cases of force majeure. ④ Your personal or third party reasons. (Include no limitation use of third party's products, software or components)
- Our company has never guaranteed the products for improper or illegal purposes and uses. This product cannot be used as medical & safety devices or other applications that will cause danger or injury. And loss or responsibility caused by above uses, you must bear it by yourself.
- With correct installation and use, this product can detect the illegal intrusion, but it can not avoid accidents and personal injury or property damage due to these accidents. Please be on the alert in your daily life, reinforce your safety awareness.
- Our company assumes no responsibility for any indirect or occasional or special or punitive damages, request, property damage or any loss of data or file. Within the max scope of law allowed, our company's compensation is no more than the products amount you paid.

Safety Instruction

This manual is intended to ensure that user can use the product properly without danger or any property loss. Please read it carefully and take care of it for further reference. Precaution measures are divided into "warnings" and "cautions" as below:

Warnings: Neglecting any of the warnings may cause death or serious injury.

Cautions: Neglecting any of the cautions may cause injury or equipment damage.

	Warning Follow these safeguards to avoid death or serious injury		Caution Follow these precautions to Prevent potential injury or Property loss
---	---	---	---

**Warning**

- Electrical safety regulations of the nation and the region must be strictly followed during installation or use.
- Please use the matched power adapter from standard company.
- Do not connect multiple IPCs with one single power adapter (Overload for adapter may lead to over-heat or fire hazard).
- Shut down the power while connecting or dismounting the device. Do not operate with power on.
- The device should be firmly fixed when installed onto the wall or beneath the ceiling.
- Shut down the power and unplug the power cable immediately when there is smoke, odor or noise rising from the IPC. Then contact the dealer or service center.
- Please contact the local dealer or latest service center when IPC works abnormally. Do not attempt to disassemble or modify the device yourself. (We shall shoulder no responsibility for problems caused by unauthorized repair or maintenance).

**Cautions**

- Make sure the power supply voltage is correct before using the camera.
- Do not drop the camera or subject it to physical shock.
- Do not touch sensor modules with fingers. If cleaning is necessary, use a clean cloth with a bit of ethanol and wipe it gently. If the camera will not be used for an extended period of time, put on the lens cap to protect the sensor from dirt.
- Do not aim the camera lens at the strong light such as sun or incandescent lamp. The strong light can cause fatal damage to the camera.
- The sensor may be burned out by a laser beam, so when any laser equipment is being used, make sure that the surface of the sensor not be exposed to the laser beam.
- Do not place the camera in extremely hot, cold temperatures (the operating temperature should be between -30°C ~ 60°C), dusty or damp environment, and do not expose it to high electromagnetic radiation.
- To avoid heat accumulation, good ventilation is required for a proper operating environment.
- Keep the camera away from water and any liquid.
- While shipping, the camera should be packed in its original packing.
- Improper use or replacement of the battery may result in hazard of explosion. Please use the manufacturer recommended battery type.

Table of Contents

STATEMENT.....	2
CHAPTER 1 PRODUCT INTRODUCTION.....	6
1.1 PRODUCT MANUAL.....	6
1.2 PRODUCT FEATURES.....	6
CHAPTER 2 OPERATING INSTRUCTIONS.....	7
2.1 NETWORK CONNECTION.....	7
2.1.1 WIRED NETWORK CONNECTION.....	7
2.1.2 WIRELESS INTERNET ACCESS.....	7
2.2 DETECTING AND CHANGING THE IP ADDRESS.....	8
2.3 SETTING THE NETWORK CAMERA OVER THE WAN.....	9
2.3.1 STATIC IP CONNECTION.....	9
2.3.2 DYNAMIC IP CONNECTION.....	9
CHAPTER 3 ACCESS TO THE IPC BY CLIENT SOFTWARE.....	11
CHAPTER 4 ACCESS TO THE IPC BY WEB CLIENT.....	12
4.1 PREPARATION BEFORE INSTALL PLUGIN.....	12
4.2 INSTALL THE HSWEBPLUGIN.EXE CONTROLS.....	12
4.3. INTERFACE OPERATIONS AND USAGE:.....	15
4.3.1 LOGIN.....	15
4.3.2 CHANGE PASSWORD.....	16
4.3.3 EXIT SYSTEM.....	17
4.4 MAIN INTERFACE DESCRIPTION.....	17
CHAPTER 5 LIVE PREVIEW.....	18
5.1 LIVE PREVIEW.....	18
5.2 CAMERA SETTINGS PTZ, ZOOM, CRUISE.....	20
CHAPTER 6 PLAYBACK.....	23
CHAPTER 7 CONFIGURATION.....	25
7.1 LOCAL CONFIGURATION.....	25
7.2 SYSTEM.....	26
7.2.1 SYSTEM CONFIGURATION.....	26
7.2.2 SCHEDULED REBOOT.....	29
7.2.3 LOG SEARCH.....	29
7.2.4 SECURITY.....	29
7.2.5 SD CARD.....	31
7.3 NETWORK.....	33
7.3.1 BASIC SETUP.....	33
7.3.2 ADVANCE SETUP.....	34
7.4 VIDEO.....	40
7.4.1 VIDEO.....	40
7.4.2 AUDIO.....	41
7.5 IMAGE.....	42
7.5.1 IMAGE.....	42

User Manual of Network Camera	V7.1.21.5
7.5.2 OSD.....	45
7.6 EVENTS.....	45
CHAPTER 8 APP CLIENT.....	53
8.1 INSTALLATION & REGISTER.....	53
8.2 ADD DEVICE.....	53
8.3 LIVE PREVIEW.....	54
8.4 PLAYBACK.....	56
CHAPTER 9 FREQUENTLY ASKED QUESTIONS.....	59

Chapter 1 Product Introduction

1.1 Product Manual

Network camera is integrated video and audio acquisition, intelligent coding and network transmission and other functions of digital monitoring products. Using embedded operating system and high-performance hardware processing platform, with high stability and reliability to meet the diverse needs of the industry.

Network camera based on Ethernet control, image compression can be achieved through the network and transmitted to different users; based on NAS centralized storage, convenient data storage and call. Network camera support TCP / IP, UDP, HTTP, HTTPS, FTP, DHCP, DNS, DDNS, RTP, RTSP, RTCP, NTP, SMTP, SNMP and other network communication protocols; support ONVIF2.4, CGI, XM, HIKVISION, LONGSE and other Internet protocols.

You can use the browser or client software to control the network camera, and through the browser to set the network camera parameters, such as system parameter settings, OSD display settings and other parameters; through the browser or client software configuration can also achieve motion detection, Abnormal alarm and other intelligent functions, the specific function parameters, please take the actual equipment.

1.2 Product Features

This section introduces the webcam from the product features, allowing you to become more familiar with and familiar with webcams.

- **Video and capture functions**

The network camera supports video recording and capture function.

- **Mirror function**

The network camera supports video horizontal, vertical, horizontal vertical flip function.

- **Day and night mode adjustment**

The network camera supports LDR automatic, daytime, night and video auto four modes. In the LDR automatic mode, the camera automatically switches mode according to ambient light changes; the picture is color in daytime mode; the picture is black and white in night mode; in video auto mode, the video image changes with the ambient light.

- **Electronic shutter function**

Low-light electronic shutter When you are in a low-light environment, you can set the low-light electronic shutter function, then the network camera shutter automatically slows down, by extending the exposure time to get brighter, less noise images.

- **Backlight compensation or Wide dynamic function**

When the backlight compensation function is turned on, the network camera will automatically adjust the brightness of the target area to ensure that the screen of the target area is clearly visible.

When wide dynamic, the network camera automatically balances the brightest and darkest screens in the monitor screen to enhance the dynamic range of the overall picture in order to see more monitor picture details.

- **Event function**

The network camera event includes motion detection, occlusion alarm, video loss, alarm input / output and abnormal alarm.

- **User management**

You can manage multiple different users through the system administrator "admin" user and configure a different level for each user.

- **Video playback**

Support the TF card or SD card to support the network camera to support video playback, query and playback card recording.

- **WIFI function**

With WIFI function camera, support wireless connection router WIFI hotspot or with a hot wireless NVR. With WIFI hotspot camera, support mobile phone connected camera WIFI hotspots, preview IPC real-time video.

- **PTZ function**

With PTZ function camera support lens zoom, aperture control, PTZ control and cruise

- **Cloud storage function**

The network camera supports the cloud storage function, which stores the device motion detection alarm information on the cloud server.



Note

- Network camera above product features depending on the specific model, please take the actual product technical parameters shall prevail.

Chapter 2 Operating instructions

2.1 Network Connection



Cautions

If you have access to the Internet at your own risk, including but not limited to the product may be subject to network attacks, hacker attacks, virus infection, the company does not cause the product abnormalities, information disclosure and other issues, but the company will In time to provide you with product-related technical support.

To view and configure the network camera over the network, you need to connect the IP camera to your computer and install IPC Search or VMS software to search and change the IP of your network camera. And then through the browser to preview and related functions of the configuration.

2.1.1 Wired network connection

Before configuring the network camera, make sure that the IP camera is connected to the computer and that you can access the network camera you want to set up. There are two types of wired connections; you can directly connect the network camera to the computer with a network cable as shown in Figure 2-1:



Figure 2-1

Set network camera over the LAN via a switch or a router as shown in Figure 2-2:

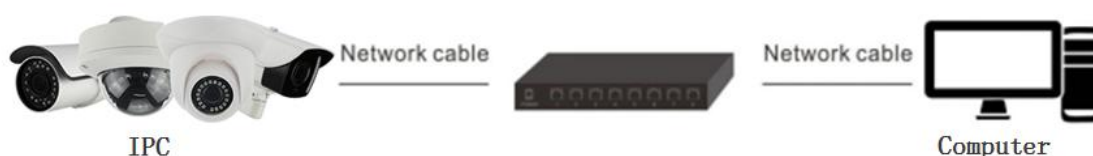


Figure 2-2

2.1.2 Wireless internet access

Some network cameras support wireless network transmission, in the wireless network environment, the network camera and computer connection as shown in Figure 2-3.



Figure 2-3

2.2 Detecting and Changing the IP Address

To access the IP address of a network camera, proceed as follows:

Step 1: Search IPC IP address.

- Using the IP Search tool, you can search all the online cameras in the LAN and display the IP, MAC address, version, port and other information of the camera, as shown in Figure2-4:

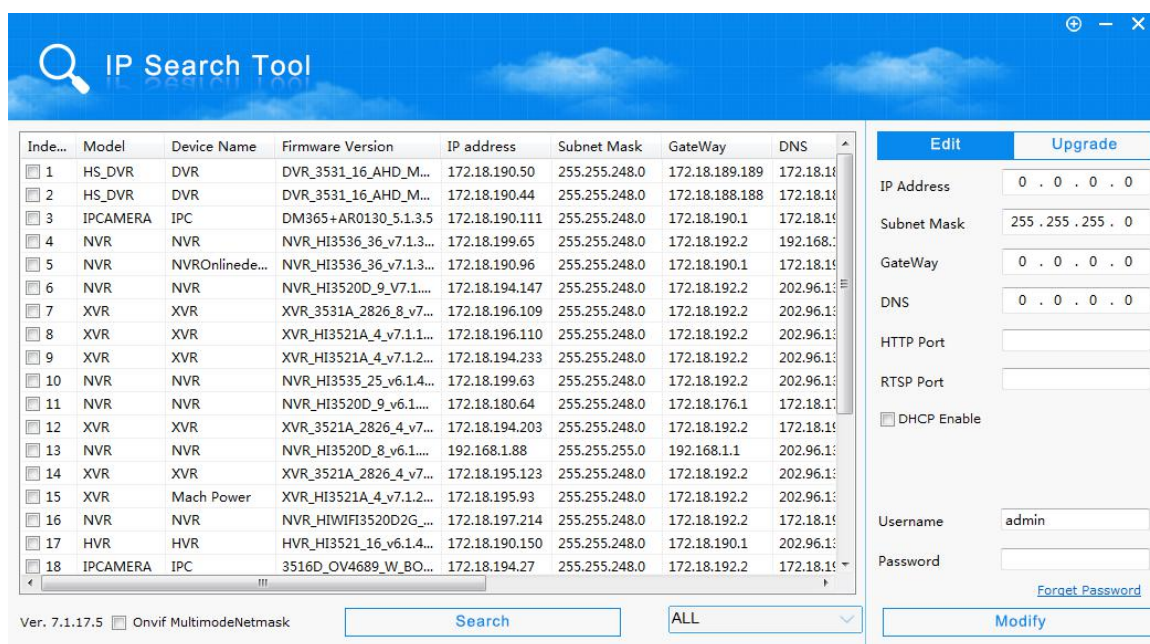


Figure 2-4

- Use the VMS client software to search for online devices. For details, refer to the VMS User Manual.

Step 2: Change the IP address and sub net mask to the same sub net as that of your computer.

- In the IP search tool to select the device to modify the IP, right side of the interface directly modify the IP and gateway, enter the password, and click "Modify".

Step 3: Open the browser to enter the IP address of the camera, enter the web login screen.

**Note:**

- The default IP address is 192.168.1.168 and the port number is 80. The default user name is admin, and password is admin. And you are highly recommended change the initial password after your first login.
- For accessing the network camera from different sub nets, please set the gateway for the network camera after you logged in. For detailed information, please refer to Section 4.4.3.1 Configuring TCP/IP Settings.

2.3 Setting the Network Camera over the WAN

This section explains how to connect the network camera to the WAN with a static IP or a dynamic IP.

2.3.1 Static IP Connection

Before you start:

Please apply a static IP from an ISP (Internet Service Provider). With the static IP address, you can connect the network camera via a router or connect it to the WAN directly.

- **The router is connected to the network camera as shown in Figure 2-5:**

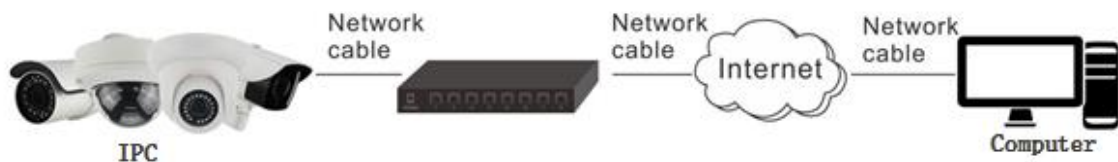


Figure 2-5

Specific steps are as follows:

Step 1: Connect the network camera to the router.

Step 2: Assign a LAN IP address, the sub net mask and the gateway. For details, please refer to 7.3.1.

Step 3: Save the static IP in the router.

Step 4: Set port mapping, e.g., 80, 8000, and 554 ports. The steps for port mapping vary according to the different routers. Please call the router manufacturer for assistance with port mapping.

Step 5: Visit the network camera through a web browser or the client software over the internet.

- **Directly through the static IP connection IPC, as shown in Figure 2-6:**



Figure 2-6

You can also save the static IP in the camera and directly connect it to the internet without using a router. For details, please refer to 7.3.1.

2.3.2 Dynamic IP Connection

Before you start:

Please apply a dynamic IP from an ISP. With the dynamic IP address, you can connect the network camera to a modem or a router.

- **The router is connected to the network camera**

Specific steps are as follows:

Step 1: Connect the network camera to the router.

Step 2: Assign a LAN IP address, the sub net mask and the gateway. For details, please refer to 7.3.1.

Step 3: In the router, set the PPPoE user name, password and confirm the password.

Step 4: Set port mapping, e.g., 80, 8000, and 554 ports. The steps for port mapping vary according to the different routers. Please call the router manufacturer for assistance with port mapping.

Step 5: Apply a domain name from a domain name provider.

Step 6: Configure the DDNS settings in the setting interface of the router.

Step 7: Visit the camera via the applied domain name.



Note:

- The obtained IP address is dynamically assigned via PPPoE, so the IP address always changes after rebooting the camera. To solve the inconvenience of the dynamic IP, you need to get a domain name from the DDNS provider (E.g. DynDns.com). Please follow the steps below for normal domain name resolution and private domain name resolution to solve the problem.

➤ **Normal Domain Name Resolution as shown in Figure 2-7:**

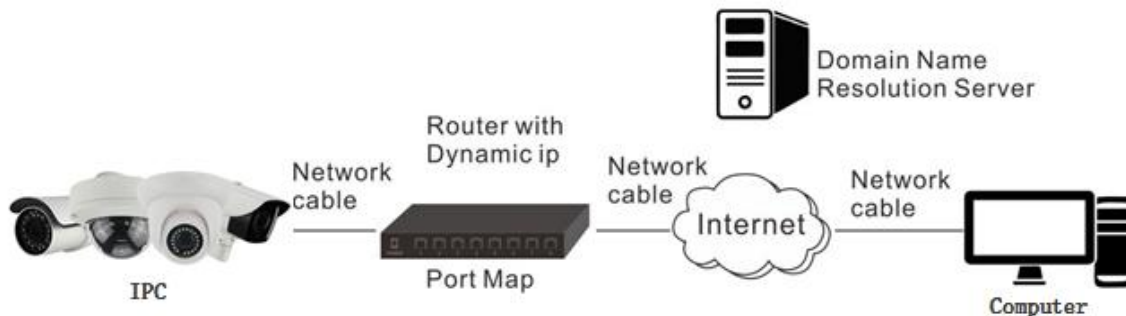


Figure 2-7

Specific steps are as follows:

Step 1: Apply a domain name from a domain name provider.

Step 2: Configure the DDNS settings in the DDNS Settings interface of the network camera. For details, please refer to 7.3.2.

Step 3: Visit the camera via the applied domain name.

➤ **Private Domain Name Resolution, as shown in Figure 2-8:**

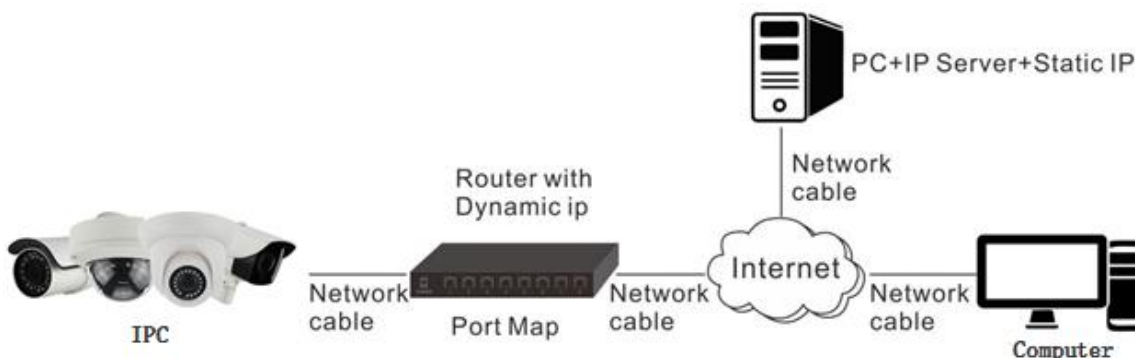


Figure 2-8

Specific steps are as follows:

Step 1: Install and run the IP Server software in a computer with a static IP.

Step 2: Access the network camera through the LAN with a web browser or the client software.

Step 3: Enable DDNS and select IP Server as the protocol type. For details, please refer to 7.3.2.

Chapter 3 Access to the IPC by Client Software

The product CD contains the VMS client software. You can view the live video and manage the camera with the software.

Follow the installation prompts to install the software. The control panel and live view interface of VMS client software are shown as show in Figure 3-1.

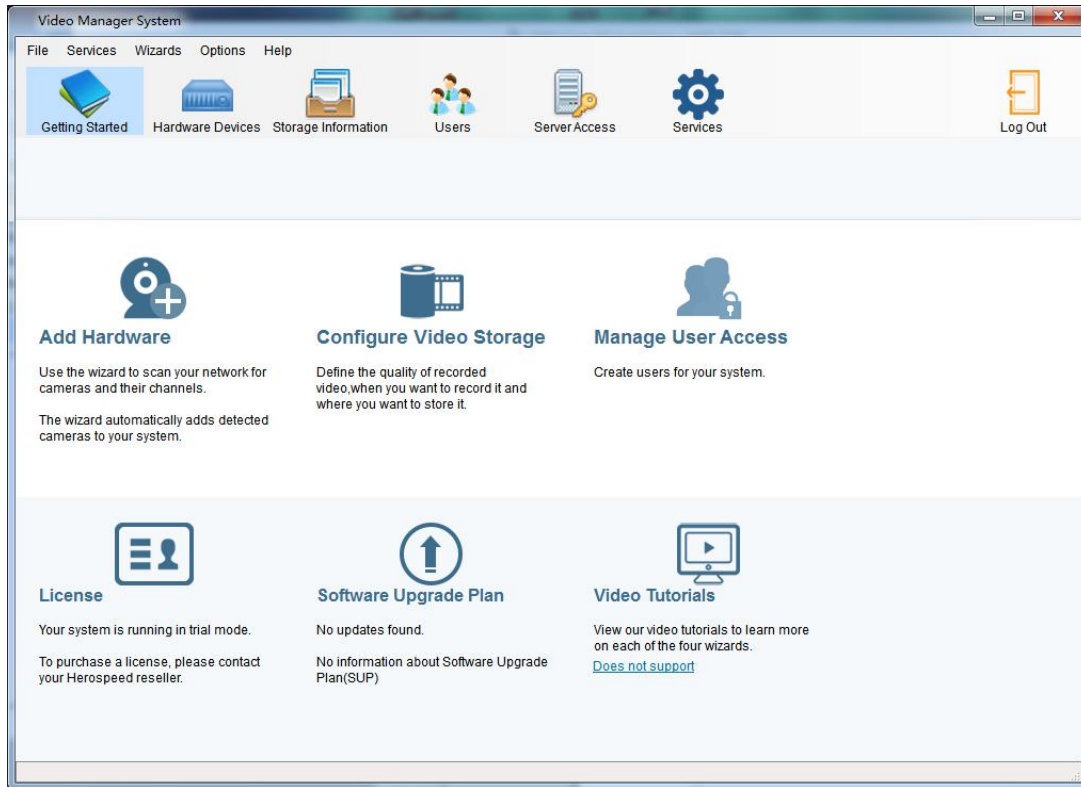


Figure 3-1



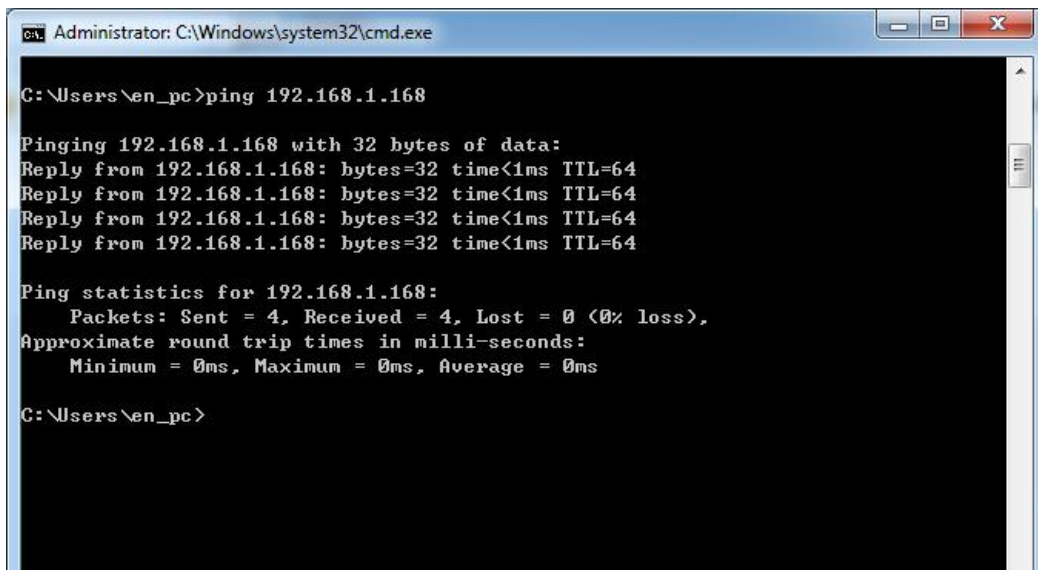
Note:

- For detailed information about the software, please refer to the user manual of the VMS Client Software.

Chapter 4 Access to the IPC by Web Client

4.1 Preparation before install plugin

In ensuring the IPC and the current user's computer after completion of all the hardware connection and power equipment normal, open the computer, run ping the IP address of the IPC (Note: the IP address of the IPC in LAN must be unique). Such as IPC IP for 192.168.1.168, run ping 192.168.1.168. If there is a response to the IPC as shown in Figure 4-1, indicating that the network connection is normal, you can download the plug-in.



```
Administrator: C:\Windows\system32\cmd.exe

C:\Users\en_pc>ping 192.168.1.168

Pinging 192.168.1.168 with 32 bytes of data:
Reply from 192.168.1.168: bytes=32 time<1ms TTL=64
Reply from 192.168.1.168: bytes=32 time<1ms TTL=64
Reply from 192.168.1.168: bytes=32 time<1ms TTL=64
Reply from 192.168.1.168: bytes=32 time<1ms TTL=64

Ping statistics for 192.168.1.168:
    Packets: Sent = 4, Received = 4, Lost = 0 (0% loss),
    Approximate round trip times in milli-seconds:
        Minimum = 0ms, Maximum = 0ms, Average = 0ms

C:\Users\en_pc>
```

Figure 4-1

4.2 Install the HsWebplugin.exe Controls




Note:

- If you have already modified the IP address of your network camera, please log in with the new IP address.

Please open the browser and input the IP address of IPC in the address bar. (For the first time to use the default address is: <http://192.168.1.168>), you will be prompted to download information, as show in Figure 4-2:



Figure 4-2

Click  to download and you can choose "Run" or save directly the installation. Click "Next" to complete the installation as shown in Figure 4-3 (1, 2, 3, 4, 5, and 6).

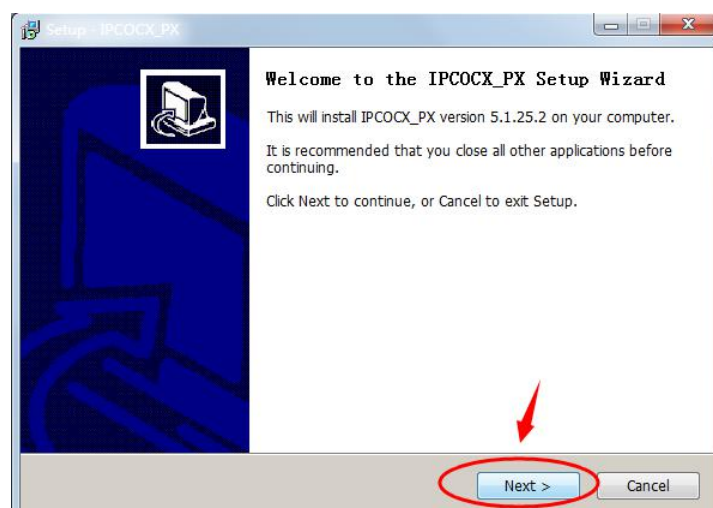


Figure 4-3 (1)

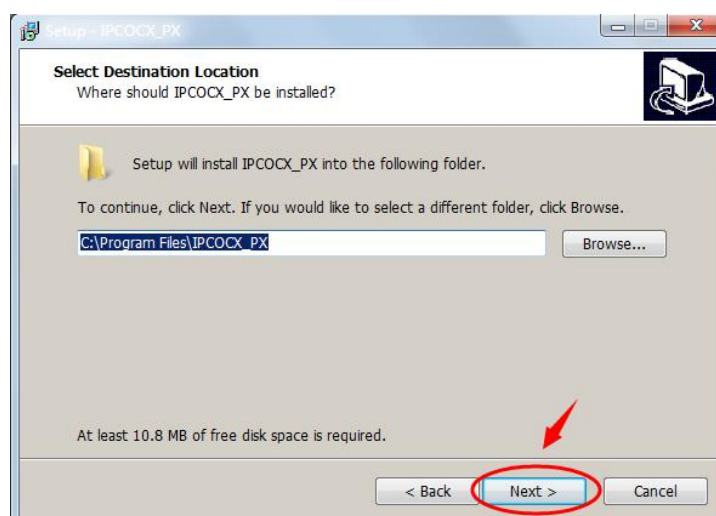


Figure 4-3 (2)

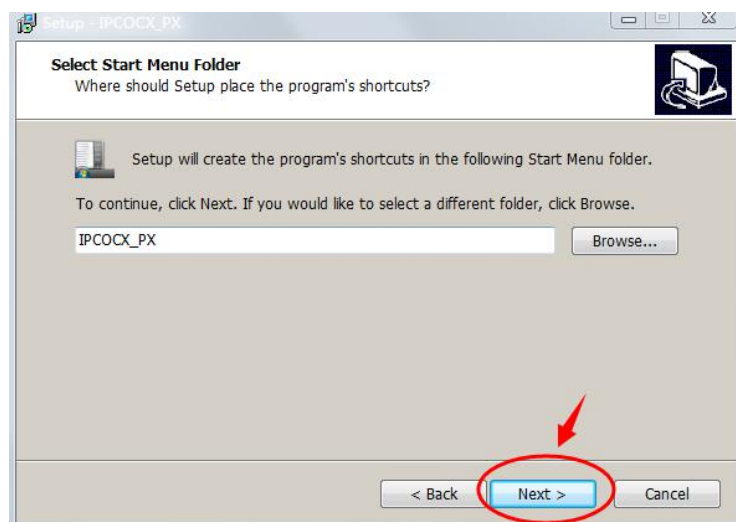


Figure 4-3 (3)

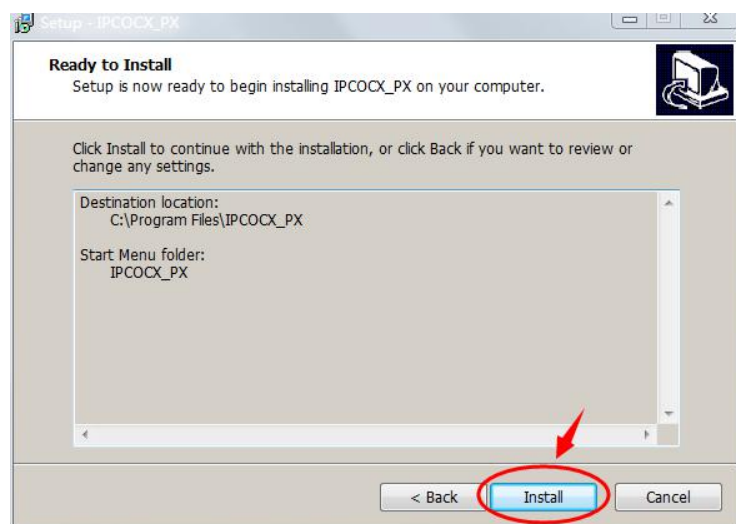


Figure 4-3 (4)

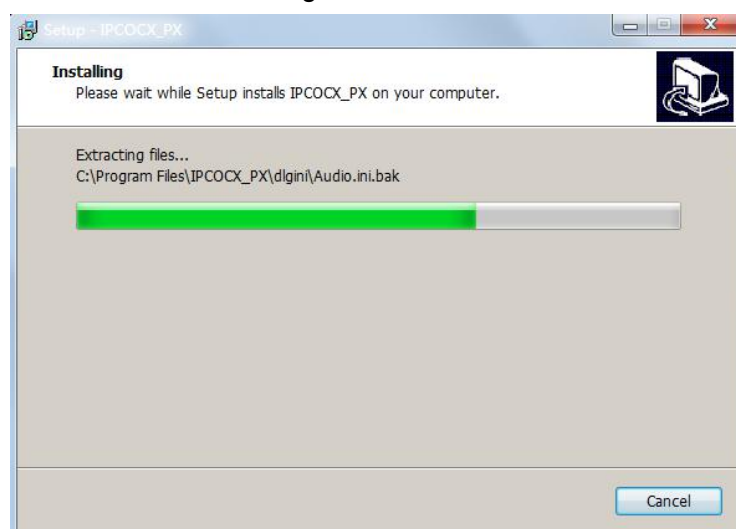


Figure 4-3 (5)

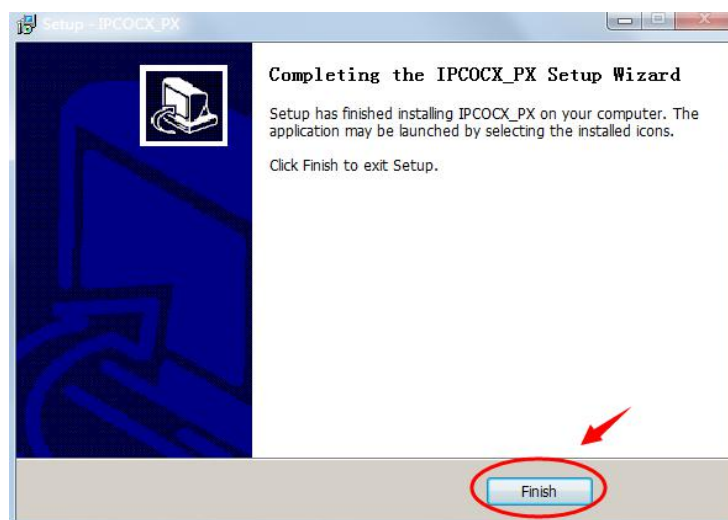


Figure 4-3 (6)

Click "Finish" returning to the page.



If the system prompt "installation failure", please uncheck the "cancel protection mode" in the setting safety of "Internet options" and enter the "custom level" ActiveX control Settings as show in Figure 4-4, and reinstall HsWebplugin.exe after save settings.

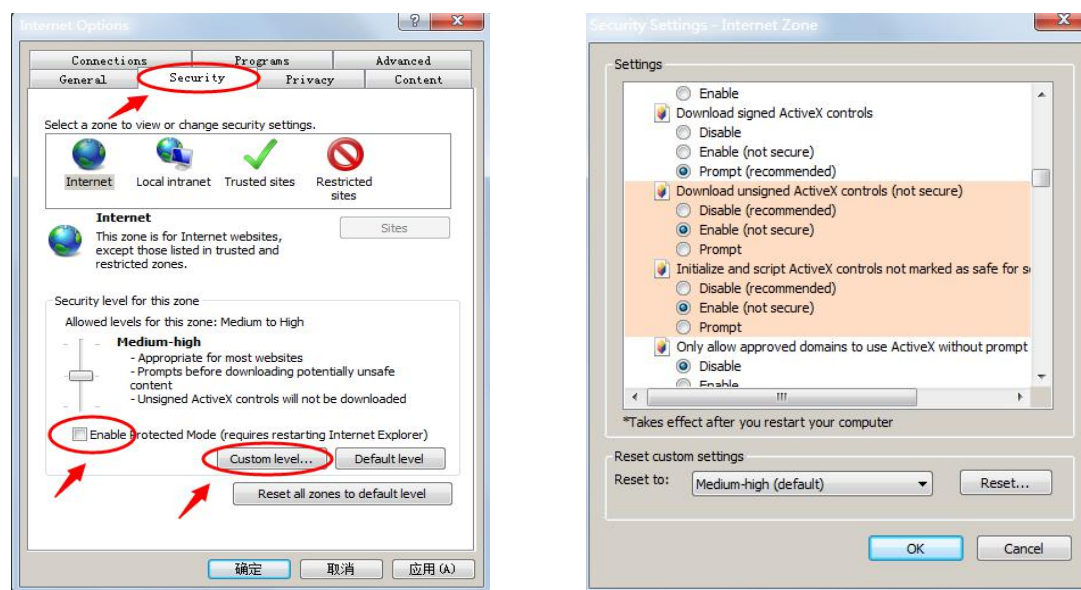


Figure 4-4

4.3. Interface operations and Usage:

4.3.1 Login

After installing the plug-in, refresh the browser interface; enter the login screen as shown

in Figure 4-5:



Figure 4-5

When you log in for the first time, enter the default user name: admin, password: admin, select the system language (currently supported in Simplified Chinese, Simplified Chinese, English, Russian, Korean, Polish, French, Japanese, Spanish, Portuguese , Italian, Hebrew, Turkish, Bulgarian, Persian, German, Dutch, Czech).

4.3.2 Change password

After successful login, the interface prompts to change the password, as shown in Figure 4-6:

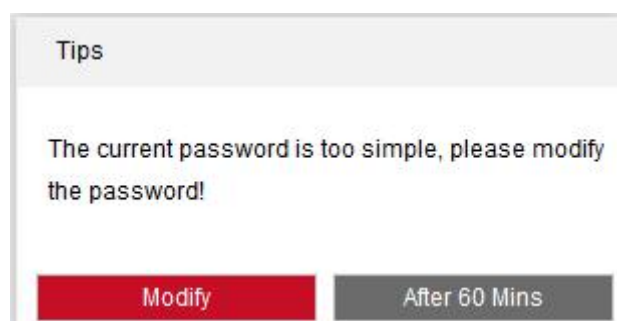


Figure 4-6

For the account security recommendations click "modify immediately", enter the user management interface to modify the password, as shown in Figure 4-7:

The screenshot shows the 'User' configuration page in the IP Camera web interface. The sidebar on the left has 'System' and 'Security' tabs. The main area has 'Edit' and 'User' tabs, with 'User' being the active tab. The 'User' tab contains the following fields:

- User Name: admin
- User Type: Admin (dropdown)
- Password: (empty text box)
- Confirm Password: (empty text box)
- ☒ Whether the following issues are set
- Security issue1: (dropdown)
- Answer1: (text box) Optional
- Security issue2: (dropdown)
- Answer2: (text box) Optional
- Security issue3: (dropdown)
- Answer3: (text box) Optional
- Secure Mailbox: (text box) Required

A red 'Save' button is located at the bottom of the form.

Figure 4-7

To change your password, follow these steps:

Step 1: Enter the new password in the Password and Confirm Password fields;

Step 2: Fill in the security issues as needed, this item is optional, may not fill;

Step 3: Click "Save" to complete the password modification, the interface will automatically jump to the login interface.



Note:

- When the IPC password for the initial password "admin", each login will prompt to change the password, please change the password and set a high-intensity password after login.

4.3.3 Exit System

When you enter the network camera main interface, you can click the upper right corner of

the "  Logout " safe exit system.

4.4 Main interface description

In the IPC main interface, you can preview real-time video, playback, configuration and PTZ control and other functions, the interface shown in Figure 4-8:

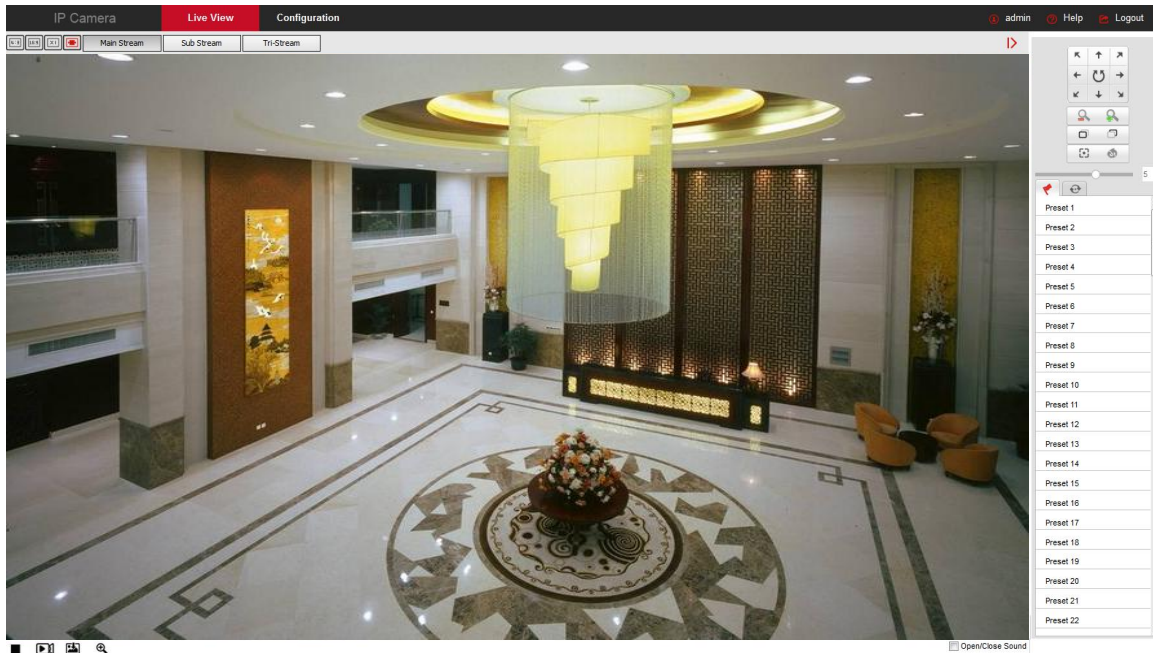


Figure 4-8

- **Live View:** For IPC monitoring screen preview, you can switch the code stream preview, preview can also be achieved video, capture, electronic zoom and other functions.
- **Playback:** Select the time or video type to find the device TF card in the video and playback.
- **Configuration:** Click into the IPC configuration interface for system configuration and function configuration.
- **PTZ Control:** Used to set the PTZ preset point, cruise line and PTZ rotation direction preview real-time video and so on.



Note:

- Network camera main interface layout function and other information, please take the actual equipment function prevail.

Chapter 5 Live preview

5.1 Live preview

Click "**Live View**" to enter the IPC preview interface, as shown in Figure 5-1:

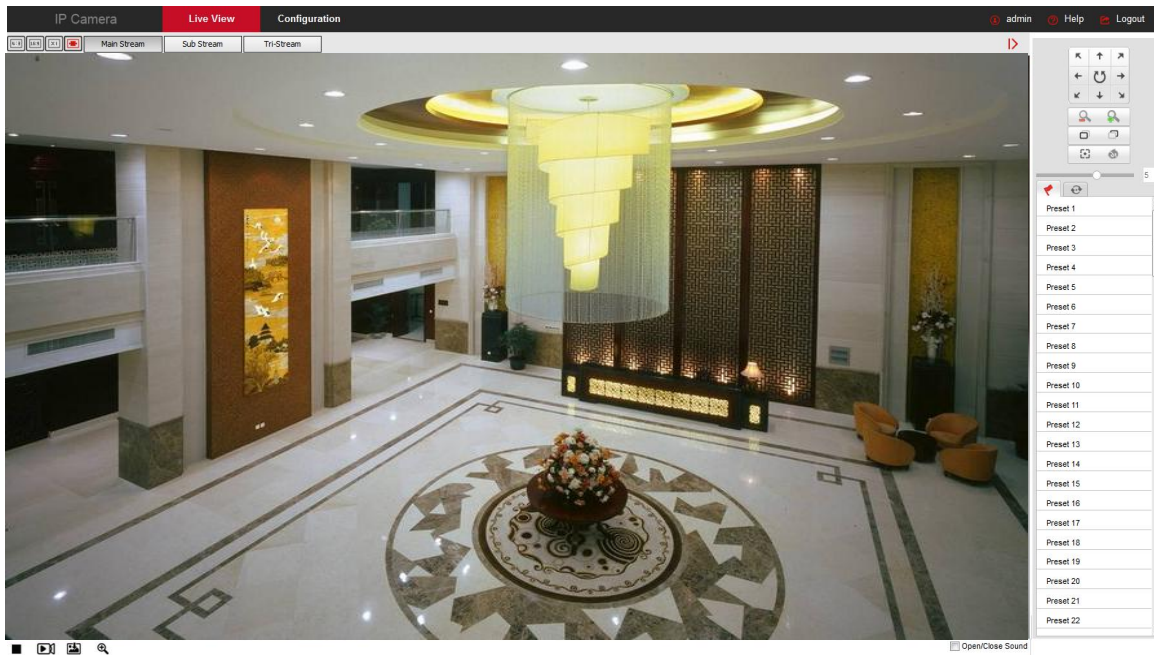










Figure 5-1

【switching window size】 In the real-time preview interface on the top left of the preview ratio option, click "4: 3", "16: 9", "X1", "full screen" to switch the video preview scale.

【switching option】 In the upper left of the real-time preview interface, there is a stream switching option. Click "Main Stream", "Sub Stream" and "Triple Stream" to switch preview video stream.

The preview interface operation buttons are shown in Table 5-1.

Icon	Description
	The window size is 4:3.
	The preview screen is displayed in its original size.
	The window size is 16:9.
	Self-adaptive window size.
Main Stream/Sub Stream/Tri-stream	To switch the real-time preview stream, take the actual function of the device.
	Start/Stop live view.
	Manually start/stop recording.
	Manually capture the picture.
	Turn on / off the electronic zoom function, turn on the electronic zoom function, in the preview image, hold down the left mouse button to select the electronic zoom area, the interface shows the






	region to enlarge the image
 Open/Close Sound	Turn on/off Sound.
 	Open / Close talk back

Table 5-1

5.2 Camera settings PTZ, zoom, cruise

Click " " on the right side of the window to display the PTZ control interface. Click " " to hide the PTZ control interface, where you can set the direction of the PTZ rotation of the camera, Zoom in / out, focus - / focus +, one-key focus, lens initialization, cruise, as shown in Figure 5-2:

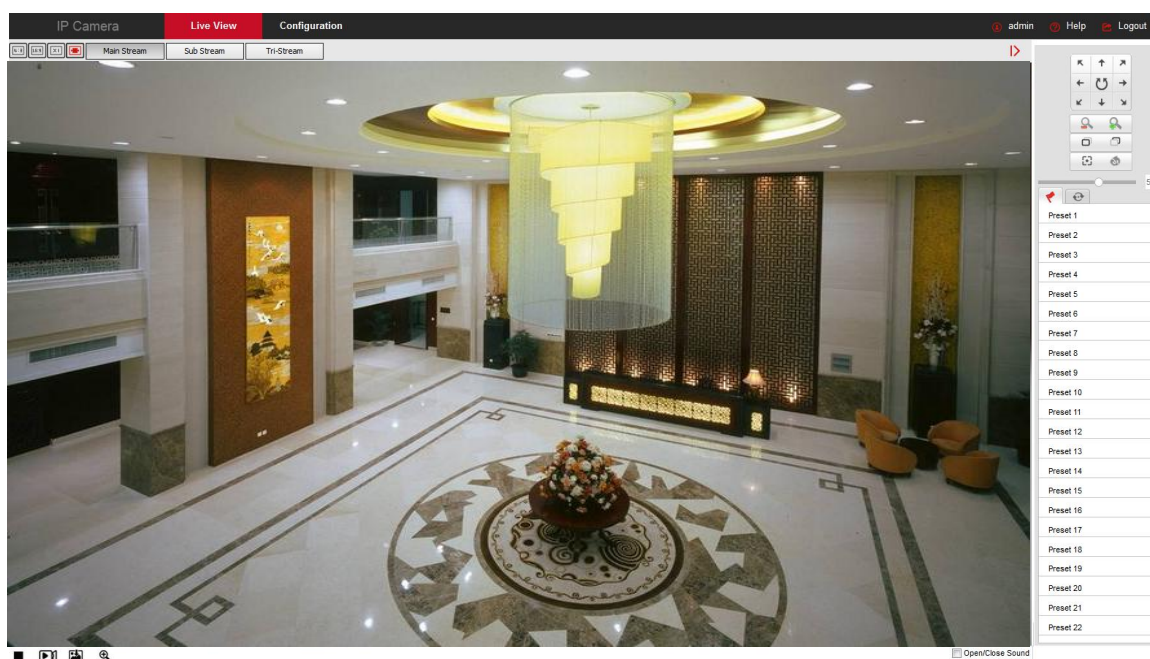


Figure 5-2

The PTZ control menu is shown in Figure 5-3 below:

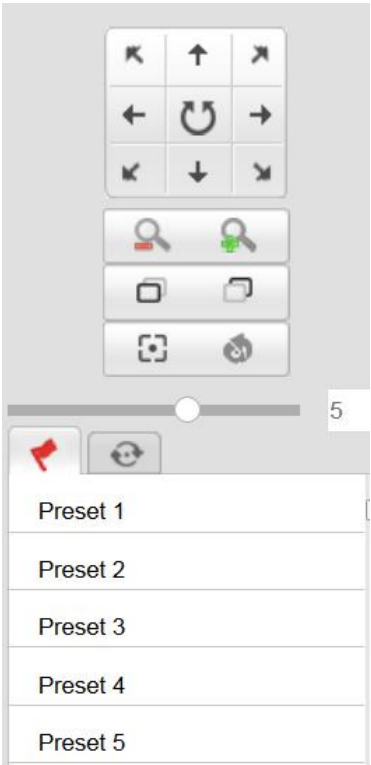


Figure 5-3

The PTZ control interface operation buttons are shown in Table 5-2 below.

按 钮	说 明
	<p>Long press the arrow keys to control the horizontal and vertical direction, such as vertical rotation. (Note: one of the bolt can only rotate horizontally, does not support vertical rotation).</p> <p>Click " ", the network camera will continue to rotate horizontally, then the button will turn red; then click once, then stop turning.</p>
	<p>"Zoom-" and "Zoom +".</p> <p>When you hold down the " ", the lens closer, the scene zoom; hold down the " ", the lens away, the scene becomes smaller.</p>
	<p>"Focus-" and "Focus +".</p> <p>In manual focus mode, adjust the " " and " " keys to make the objects within the scene clear.</p>
	One Key Focus.
	Init Camera.
	Adjust the speed of rotation of the pan / tilt.








	<p>Preset</p> <p>Click Preset to enter the Preset Settings menu and click the Presets icon to edit and recall the preset points.</p> <p>Select the preset number, click the "" button after the number, turn the preview channel image, make the image stay in a certain position; click "" button to call the preset point rotation; click "" button Clear the preset point.</p>
	<p>Cruise</p> <p>Click "Cruise" to enter the cruise settings menu, click the cruise icon area can be cruise editing and call.</p> <p>Select a cruise path, click the cruise path "" to enter the cruise path interface, select the preset point number, set the speed and time, click "OK", according to this method to add multiple preset points, and finally click "" Button to save, you can call the cruise line.</p>

Table 5-2

**Note:**

- Some cameras support PTZ, zoom, preset, cruise and other function settings, please specify the specific equipment.
- Zoom camera without cruise function; PTZ can only rotate horizontally, does not support vertical rotation.
- PTZ control function only supports the camera with PTZ function or PTZ camera, please refer to the actual function of the specific equipment.
- Up to 128 preset points are configured.
- A cruise line must set at least 2 preset points.
- "One Touch" and "Lens Initialization" are available for cameras equipped with an electric lens. Due to the limitation of the scene, the effect of the one-button focus function may not be as expected. In this case, it is recommended that you manually click the focus button to complete the focus operation. In the models with the electric lens can be PTZ speed adjustment to change the focus and zoom speed.
- Click the "one-click focus" to automatically complete the focus action, when the "one-click focus" appears difficult to focus clear case, click the "lens initialization", the lens parameters back to the initial position, click " You can focus clear.

Chapter 6 Playback

In the main interface, click “**Playback**” into the video playback interface. Playback interface can be stored in the camera SD card / TF card within the video file for query, playback and download operations. as show in Figure 6-1:

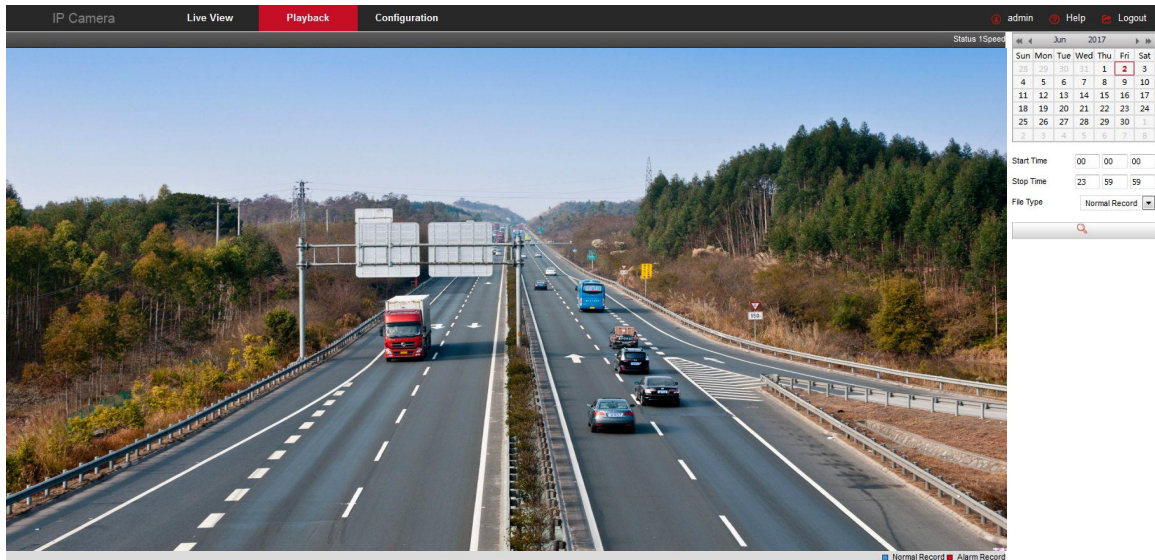


Figure 6-1

Here you can according to the video type (ordinary video, alarm video) and video time to query SD / TF card in the video file, the query to the video file playback, screenshots, clips and download.

【Video search】 Select the start time, end time, file type "normal video" or "alarm video", click "🔍" to find, meet the conditions of the video file will be on the right side of the calendar interface to select the red date (red date on behalf of the day of video), select the start time, Displayed on the timeline.


【Play/Stop】 After searching for a video, click "▶" to start playing the video and click "⏏" to stop playing the video.


【Drag and drop】 Video playback, the left mouse button click on the time axis to play the position, drag left and right, drag it to the middle of the yellow time point position, playback channel to play the point in time recording.



【Fast Forward】 Video playback, click "⏮", video to 2 times the speed of playback.


【Slow Forward】 Video fast forward playback, click "⏭", the video speed back to normal.


【Electronic zoom】 Video playback, click "🔍", hold down the mouse in the playback interface to select the area to enlarge, release the mouse, the area is enlarged, click the

right mouse button to restore the zoom, click " " to turn off the electronic zoom.

【Capture】 Video playback, click " " to capture the current playback screen image, the interface pops up the capture picture folder, which shows just captured the picture.

【Video cut】 Video playback, click " ", start the current playback video to start recording, click " " again, will stop the video, the interface pops up the clip folder, which shows just the clip video.

【Timeline magnification】 Click the right side of the window on the right side of the " " button, the interface below the time axis is enlarged, the maximum can be amplified to 5min a grid.

【The timeline is reduced】 When the timeline is zoomed in, click the " " button to return to the recording timeline before zooming in.

【Video File Query and Download】 Select the date, time period and video type in the calendar. Click "" on the right side of the window to pop up the video download interface. The interface will automatically search all the video files of the corresponding time range and video type, As shown in Figure 6-2:

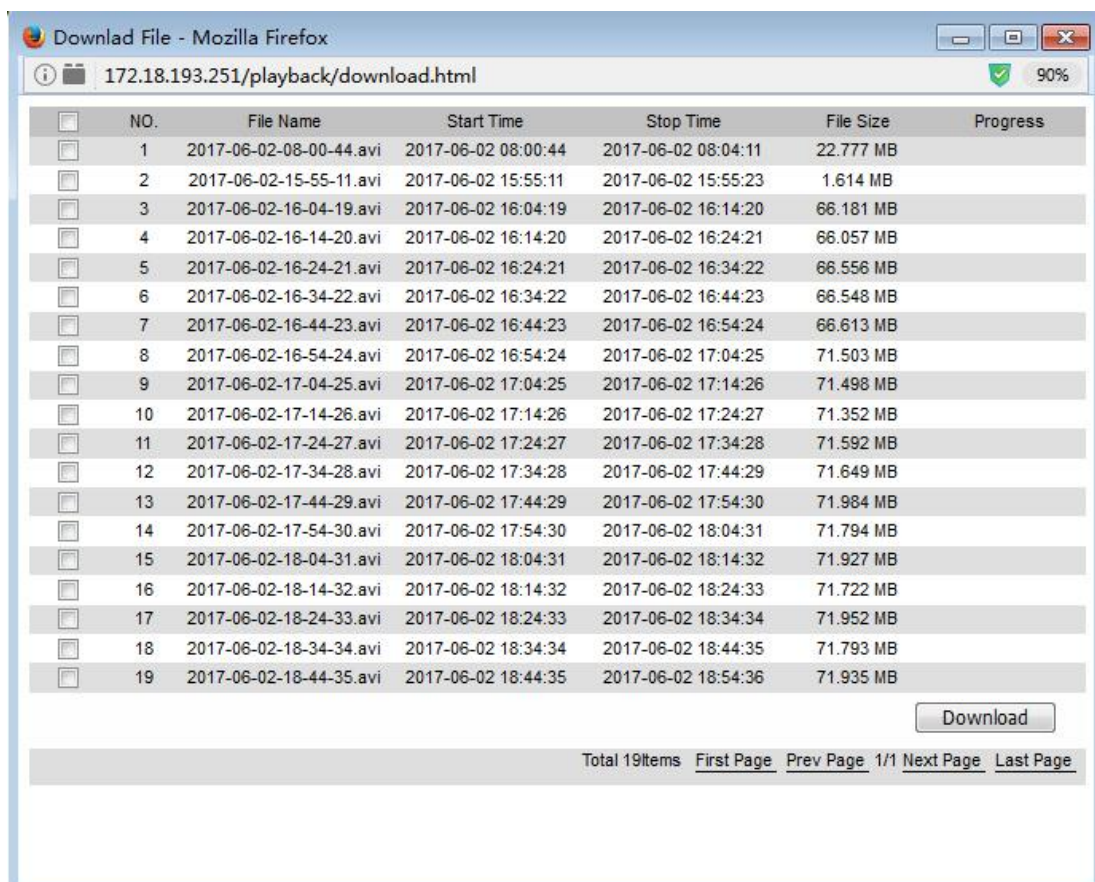




Figure 6-2

【First Page】Click to return to the first page of the video file list.

【Prev Page】Flip function, click to switch to the previous page.

【Next Page】Flip function, click to switch the next page.

【Last Page】Click to quickly jump to the last page of the video file list.

【Download】Select the file number to be downloaded in front of the "", click "Download" button, the file began to download. You can also check the top of the serial number in front of "", select all the files on the page, click "download".



Note:

- No SD card storage video camera and no video playback settings interface, please take the camera physical specific functions shall prevail.
- Please refer to 7.1 Local Configuration for the settings of the video and picture saved in the playback interface.

Chapter 7 Configuration

Click **Configuration** in the main interface to enter the local configuration interface. Here you can set the device system, network, video, images, events and other parameters.

7.1 Local Configuration

In the main interface, click "Configuration → Local Configuration" to enter the local configuration interface, where you can set the "Record File", "Picture and Clip", "Log Export", "Online upgrade" storage path. Change the path by selecting Browse, as shown in Figure 7-1 below:

IP Camera	Live View	Playback	Configuration
Local Configuration	Local Configuration		
Local Configuration			
System	Record File Settings		
Network	Save record files to: C:\Users\summer Browse Save downloaded files to: C:\IPC\DownloadFiles Browse		
Video	Picture and Clip Settings		
Image	Save capture files in live view to: C:\Users\summer Browse Save capture files when playback to: C:\IPC\PlaybackPics Browse Save clips to: C:\IPC\PlaybackFiles Browse		
Events	Log export		
	Log export save path: C:\Users\summer Browse		
	Online Upgrade		
	Upgrade package save path: C:\ Browse		
	Save		

Figure 7-1

【Record File Settings】Set the saving path of the recorded video files. Valid for the record files you recorded with the web browser.

【Save record files to】Set the saving path for the manually recorded video files.

【Save downloaded files to】Set the saving path for the downloaded video files in playback mode.

【Picture and Clip Settings】Set the saving paths of the captured pictures and clipped video files. Valid for the pictures you captured with the web browser.

【Save capture files in live view to】Set the saving path of the manually captured pictures in live view mode.

【Save capture files when playback to】Set the saving path of the captured pictures in playback mode.

【Save clips to】Set the saving path of the clipped video files in playback mode.

【Log Export】Set the saving paths of the exported log.

【Log export save path】Set the saving path of the exported log.

【Online Upgrade】Set the IPC online upgrade file in the computer storage path, used to save the page to download the upgrade file.

【Upgrade package save path】Set the online upgrade package to save the path.

7.2 System

In the main interface, click "Configuration → System" to enter the system configuration interface. The system consists of system configuration, scheduled reboot, log query and security.

7.2.1 System Configuration

In the main interface, click "Configuration → System → System Configuration" to enter the system configuration interface.

① Device Information

In the main interface, click "Configuration → System → System Configuration → Device Information" to enter the device information configuration interface, where you can view the basic information of the current device, as shown in Figure 7-2:

Device Information		Time Settings	DST	Maintenance
Basic Information				
Device Name	IPC			
Firmware Version	S3L22M_IMX290_W_7.1.19.4			
Software Version	7.1.17.3			
WEB Version	7.1.17.170419			
Number of Channels	1			

Figure 7-2

【Device Name】 The name of the current IPC.

【Firmware Version】 The current version of the IPC.

【Software Version】 The current HsWebplugin.exe control version of the IPC.

【WEB Version】 The current page version of the IPC.

【Number of Channels】 The current channels of the IPC, the default is 1.

② Time Setting

In the main interface, click "Configuration → System → System Configuration → Time Settings" to enter the time setting interface, where you can set the device time, as shown in Figure 7-3 below:

Device Information **Time Settings** DST Maintenance

Time Settings

Time Zone GMT+00 Dublin, Edinburgh, London, Lisbon, Monrovia, Casabl ▼

Time Sync.

Time in Camera 1970-01-05 20:52:32

☒ NTP

SNTP Server time.nist.gov ▼
time.nist.gov

☐ Set Manually

Time Settings 1970-01-05 20 52 24 ▼ ▼ ▼

☐ Synchronize with computer time

Computer time 2017-05-31 16:22:58

☐ NVR prohibit modification IPC Time

Figure 7-3

【Time Zone】 Displays the current device selection time zone.

【Time in Camera】 Displays the current time of the device.

【NTP】 The IPC time will synchronization with network, and you can change the different time zones. (This feature requires that IPC network environment can connect to the Internet.) Click on the "Save" after completing the settings.

【Set Manually】 Setting the IPC ' s date and time manually. Click on the "Save" after completing the settings.

【Synchronize with computer time】 The IPC will synchronize with the computer time and date that your connect currently. Click on the "Save" after completing the settings.

【NVR prohibit modification IPC time】 The IPC time will be not affected by the backend storage devices (such as NVR and XVR, etc.) after check this option. The IPC ' s time will be running according to the user settings.

③ DST

In the main interface, click "Configure → System → System Configuration → Daylight Saving Time" to enter the daylight saving time setting interface, where you can enable daylight saving time, set daylight saving time, end time and offset time, as shown in Figure 7-4:

Figure 7-4

④ Maintenance

In the main interface, click "Configuration → System → System Configuration → Maintenance" to enter the system maintenance settings interface, where you can restart the device, restore factory settings, manual upgrade, online upgrade, as shown in Figure 7-5:

Figure 7-5

【 Reboot System 】 The IPC will restart again automatically after clicking "Reboot System".

【 Restore Factory Settings 】 The IPC will restore to factory default parameters automatically after clicking this option. (Camera IP and other network parameters will not be restored to the factory, other settings will be restored to factory defaults. Please operate this function carefully).

【 Upgrade-Firmware 】 Clicking "Browse" to add upgrade file package, and upgrading the IPC program. (Please careful operation, the error of upgrade file will cause equipment system operate abnormally).

【 Online Upgrade-Current Version 】 To determine the device connected to the network, check the current version number, click on the "Check", such as the pop-up prompts the

latest upgrade version, whether to download, click "OK", the device began to download the upgrade version to complete the automatic upgrade. Click "Cancel" to cancel the upgrade.

7.2.2 Scheduled Reboot

In the main interface, click "Configuration → System → Timing Reboot" to enter the scheduled reboot settings interface, where you can set the time for the device to restart, set the restart "cycle" in the drop-down menu, for example, set "3:03 on the 3rd of each month "restart, click Save, IPC will be at 3 o'clock on the 3rd 3 times a reboot. As shown in Figure 7-6 below:

Scheduled Reboot

Monthly ▼ 03 ▼ Day 03 ▼ Hour 03 ▼ Minute

Figure 7-6

7.2.3 Log Search

In the main interface click on the "configuration → system → log query" into the log query interface, where you can query the device login, account number, alarm and all other relevant information. As shown in Figure 7-7 below:

ID	Time	Detail
1	1970-01-05 22:14:30	Private : index 0: 0 index 1: 0 index 2: 0 Rtsp : index 0: 0 index 1: 0 index 2: 0
2	1970-01-05 14:34:47	System is running now
3	1970-01-05 14:34:20	System Restore to Default

Start Time :

1970-01-05 00:00:00

1970-01-05 23:59:59

Search

Clear

Log export

Figure 7-7

【Search】 It can find running record of IPC from the start time to end time.

【Clear】 Clicking clear button to empty all logging.

【Anmelden Export】 Save the contents of the current log to the location you specified in txt format.

7.2.4 Security

In the main interface, click "Configuration → System → Security" to enter the user management settings interface, where you can add, edit, delete the user, you can also query the current user information. The current user for the administrator "admin", the user can actually need other users; you can create up to 10 users. As shown in Figure 7-8 below:

User

Viewer	Authority	Edit	Delete
admin	Admin	Edit	

Add User

Figure 7-8

① Add a User

- Step 1:** Click **Add User** to add a user;
- Step 2:** Input the **User Name**, select **Level** and input **Password**.
- Step 3:** Click **OK** to complete the user to add.
- Add User as shown in Figure 7-9:

Edit

User Name

ALen

User Type

Operator

Password

.....

Confirm Password

.....

Ok

Cancel

Figure 7-9

 **Cautions**

- In order to improve the security of the product network, please change the password of the user name regularly. It is recommended to update the

maintenance every 3 months. If the network camera is used in a high security risk environment, it is recommended to update once a month or every week.

- It is recommended that the system administrator manage the user effectively, remove the unrelated user and shut down the unnecessary network port.

**Note:**

- The *admin* user cannot be deleted and you can only change the *admin* password.
- When setting the network camera password, the password length is 8-31 characters and must contain numbers and letters.
- Add up to 10 users.

Password strength rules are as follows:

- If the set password contains three or more types (numbers, lowercase letters, uppercase letters, special characters), it is a strong password.
- If the password is set to a combination of numbers and special characters, lowercase letters and special combinations of characters, capital letters and special characters, lowercase letters and uppercase letters, are in the password.
- If the password is set to a combination of numbers and lowercase letters, numbers and uppercase letters are weak passwords.
- Password length is equal to 8, the password contains only one type of character, password and user name or password is the user name of the write, the above types of passwords are risk password, do not recommend this set.
- To better protect your privacy and improve product safety, we recommend that you change your risk password to a high-strength password.

② Edit the User

Step 1: Left-click to select the user from the list and click **Modify**.

Step 2: Modify the **User Name**, **Level** or **Password**.

Step 3: Click **OK** to finish the user modification.

**Note:**

- The password setting rule is the same as the password rule when adding a user.

③ Delete Users

Step 1: Click to select the user you want to delete and click **Delete**.

Step 2: Click **OK** on the pop-up dialogue box to delete the user.

7.2.5 SD Card

① SD Card

In the main interface, click "Configuration → System → SDCard" to enter the SD Card management settings interface, here you can view the SD card related information and format the SD card as shown in Figure 7-10:

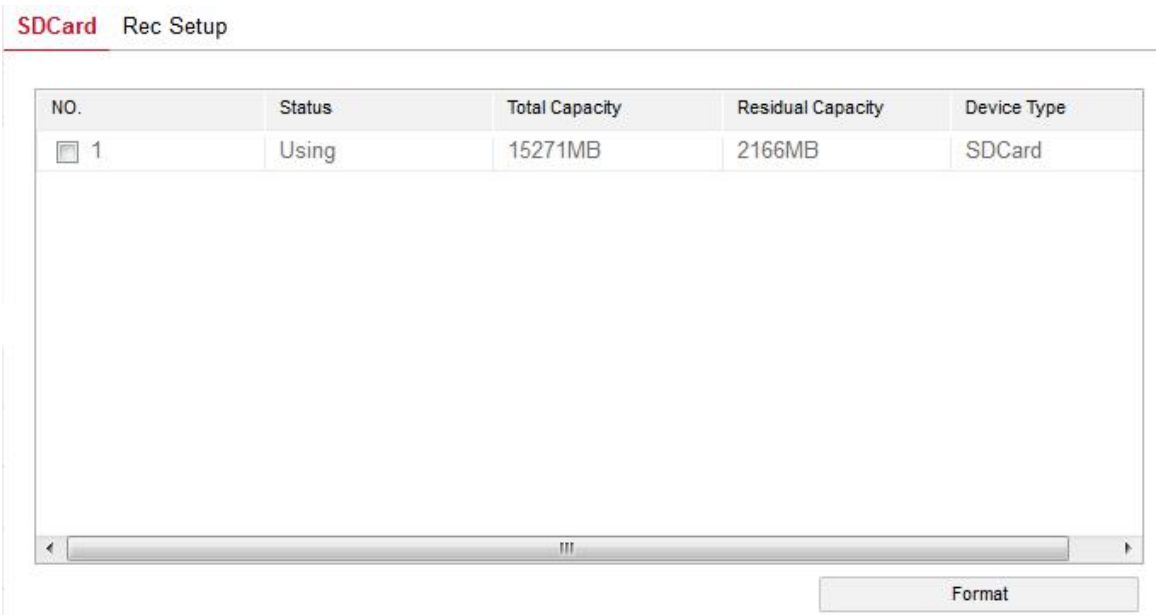


Figure 7-10

SD card format steps are as follows:

- Step 1:** Select the disk to be formatted, click "Format";
- Step 2:** Click "OK" in the pop-up prompt box;
- Step 3:** Wait for the format to complete the progress bar, formatting is complete, check the card information, Total Capacity = Residual Capacity, formatted successfully.

② Rec Setup

In the main interface, click "Configuration → System → SDCard → Rec Setup" to enter the recording setting interface, here you can open the SD card video, set the SD card recording schedule and video mode, as shown in Figure 7-11:

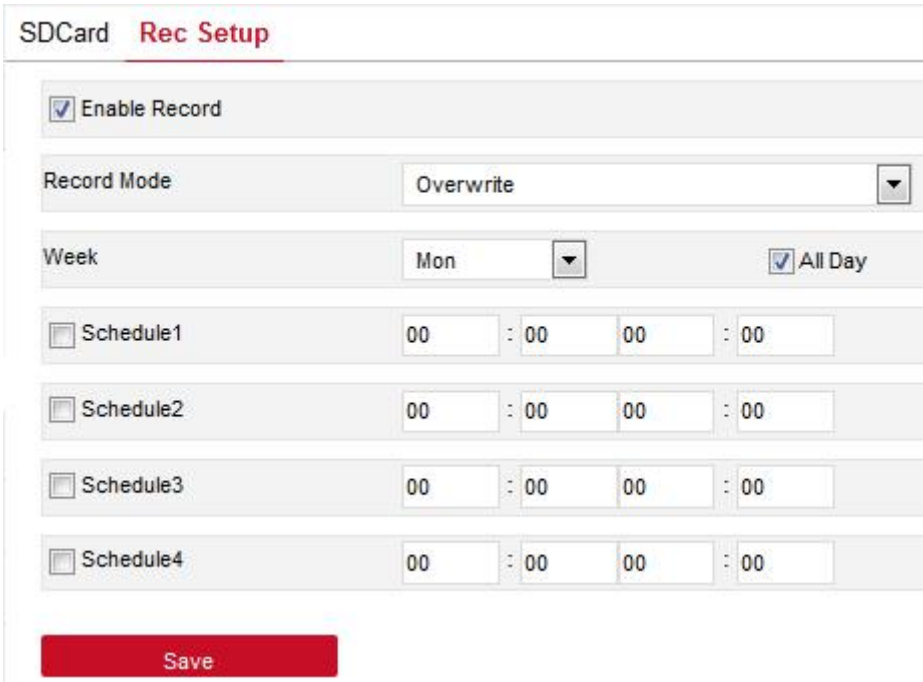


Figure 7-11

Here you can open the SD card video, set the SD card recording schedule and recording mode.



Note:

- No SD card video recording function of the camera No SD card management interface, please take the camera physical specific functions shall prevail.

7.3 Network

In the main interface, click "Configure → Network" to enter the network settings interface, the network is divided into basic setup and advanced setup configuration.

7.3.1 Basic Setup

① TCP/IP

In the main interface, click "Configure → Network → Basic Setup → TCP / IP" to enter the TCP / IP interface. Here you can set the IP address, subnet mask, gateway, and DNS of the device as shown in Figure 7-12 below.

TCP/IP Port

NIC Settings

☐ DHCP

IPv4 Address: 172.18.193.251 Test

IPv4 Subnet Mask: 255.255.248.0

IPv4 Default Gateway: 172.18.192.2

DNS Server

Preferred DNS Server: 172.18.192.2

Save

Figure 7-12

The IPC is connected to the router that have opened the DHCP function, check the DHCP option, and the IPC can be get automatically IP address、Net mask、Default Gateway and DNS。

Close DHCP, you can manually modify the IPC's IP address, subnet mask, default gateway and preferred DNS server information, manually modify the finished, click "Test" to determine the modified IP address is available in the LAN (that is, whether the conflict with other equipment IP), Prompt "IP available", click Save to complete the settings.

② Port

In the main interface, click "Configuration → Network → Basic Setup → Port" to enter the port setting interface, where you can set the IPC network port and protocol port, the network port has HTTP port (default is 80), RTSP port (default is 554) , The HTTPS port

(default is 443), the protocol port has the ONVIF protocol port (default is 8999), the HIK protocol port (default is 8000), and the XM protocol port (default is 34567). As shown in Figure 7-13 below:

TCP/IP Port	
Port	
HTTP Port	80
RTSP Port	554
HTTPS Port	443
Protocol Port	
ONVIF Port	8999 <input checked="" type="checkbox"/> ONVIF Protocol Enable
HIK Port	8000 <input checked="" type="checkbox"/> HIK Protocol Enable
XM Port	34567 <input type="checkbox"/> XM Protocol Enable

Figure 7-13

【ONVIF】 When the IPC access to ONVIF agreement with the back-end equipment, the need to enable ONVIF protocol; the ONVIF protocol is enabled.

【HIK】 When the IPC accesses the private protocol back-end device, such as the HIK device, the HIK protocol is enabled.

【XM】 When the port is added, the port number is used. When entering the XM back-end device, enable the XM protocol, and the port number uses the XM port number.



Note:

Please do not arbitrarily modify the port parameters; when there is a port conflict need to modify the port number, please modify the following information:

- HTTP and HTTPS port: use the browser login need to add the address after the port number. If you repair HTTP port number 8555, when you use the browser login, you need to enter .
- RTSP port: real-time transmission protocol port, to ensure that the modified port is available.

7.3.2 Advance Setup

In the main interface click on the "configuration → Network → Advanced Setup" to enter the advanced configuration interface, where you can set the device DDNS, FTP, SMTP, platform access, cloud storage and other functions.

① DDNS

In the main interface, click "Configuration → Network → Advanced Setup → DDNS" to enter the DDNS function settings interface, where you can open the IPC DDNS function, select the DDNS type, enter the site name, corresponding DDNS type user name, password, click "Save". As shown in Figure 7-14:

Figure 7-14

【DDNS】 Enable / disable DDNS function.

【DDNS Type】 Choose the type of peanut shell, NO-IP and Dyn three types.

【Site Name】 The input selection type corresponds to the successful domain name.

【DDNS Account】 The input selection type corresponds to the registered account.

【DDNS Password】 The input selection type corresponds to the registration password.

【Confirm Password】 Re-enter the password, this password and DDNS password.

【Status】 Shows whether the current device is set up DDNS successfully.

【Service Type】 Displays the type of user name.

【Links to service providers】 Show service provider information.



Note:

- Access via DDNS domain requires IPC to be accessible to the Internet.

② FTP

In the main interface, click "Configure → Network → Advanced Setup → FTP" to enter the FTP server settings interface, where you can set the FTP server information, input the FTP server address, port, user name, password, set the storage path, select the FTP server file Format AVI or JPEG, click "Save". You can also be set to complete the click "Test" to determine whether the IPC and FTP server is connected. The FTP setup interface is shown in Figure 7-15:

DDNS	FTP	SMTP	P2P	Cloud	Other
------	------------	------	-----	-------	-------

FTP

FTP Server	<input type="text" value="192.168.1.1"/>	<input type="button" value="Test"/>
Port	<input type="text" value="21"/>	
User Name	<input type="text" value="ftpuser"/>	<input type="checkbox"/> Anonymous
Password	<input type="password" value="••••"/>	
Confirm Password	<input type="password" value="••••"/>	
FileUpload	<input type="text" value="default_folder"/>	
<input type="checkbox"/> AutoCover		
Upload Via FTP	<input type="text" value="JPEG"/>	<input type="button" value="v"/>

Figure 7-15

【FTP Server】 Fill in the FTP server address.

【Port】 Fill in the FTP server port number.

【User Name】 Fill in the FTP server username.

【Password】 Fill in the FTP server password.

【Confirm Password】 Fill in the FTP server password.

【File Upload】 Automatically creates a folder that you named in the FTP storage path.

【Auto Cover】 When enabled, the oldest FTP server will be overwritten automatically when the FTP server is full.

【Upload Via FTP】 In the drop-down menu, select FTP file format, JPEG image format and AVI video for selection. Click on the "Save" after completing the settings.

③ SMTP

In the main interface, click "Configure → Network → Advanced Setup → SMTP" to enter the mail settings interface, where you can set the SMTP server information, enter the sender mailbox, SMTP server address, port, select the upload SMTP file format, Box account and password. To the recipient address, click "Save". The SMTP setup interface is shown in Figure 7-16.

DDNS	FTP	SMTP	P2P	Cloud	Other
Sender					
Sender		user@domain.com			
SMTP Server		smtp.domain.com			
Port		25			
Upload Via SMTP		MESSAGE ▼			
Alarm Duration		10 s ▼			
<input type="checkbox"/> My Server Requires Authentication					
User Name		smtpuser			
Password		••••			
Confirm Password		••••			
Receiver					
Email1		user@domain.com		Test	
Email2				Test	
Email3				Test	

Figure 7-16

Sender

【Sender】 Fill in the full address of the sender mailbox.

【SMTP Server】 Fill in your email server address.

【Port】 Fill in your email server port.

【Upload Via SMTP】 In the drop-down menu, select SMTP file format, JPEG image format, AVI video and message for selection. Click on the "Save" after completing the settings.

【Alarm Duration】 Set the sending interval.

【 My Server Requires Authentication 】 When enabled, the server and user are authenticated to ensure that the data is sent to the correct client and server.

【User Name】 Fill in the send mailbox user name.

【Password】 Fill in the send mailbox password.

【Confirm Password】 Fill in the send mailbox password.

Receiver

【Email 1, 2, 3】 Fill in the full address of your inbox, here up to 3 inboxes, click on the completion of the completion of the "test" to ensure that all the correctness of the input information and network connectivity of the camera.

④ P2P

In the main interface, click "Configure → Network → Advanced Setup → P2P" to enter the P2P settings interface, as shown in Figure 7-17 below:



Figure 7-17

This function is mainly used mobile client for remote monitoring. Currently, the FreIP client we offer has Android version and iOS version. Users can be added to the appropriate mobile client by scanning the QR code.

**Note:**

- Remote monitoring requirements IPC connected to the Internet.

⑤ Cloud

In the main interface, click "Configure → Network → Advanced Setup → Cloud" to enter the cloud storage configuration interface, as shown in Figure 7-18 below:

DDNS	FTP	SMTP	P2P	Cloud	Other
Cloud					
Cloud Storage Type	None			Unbound	
Web	<input type="text"/>				
Auth Code	<input type="text"/>				
User Name	<input type="text"/>				
Total Capacity	<input type="text"/>				
Used Capacity	<input type="text"/>				

Figure 7-18

【 Cloud Storage Type 】 Select the cloud storage type, Dropbox or Google in the drop-down menu.

【 Web 】 Depending on the type of cloud storage selection play a cloud url, login web site registered account according to clew clouds.

【 Auth Code 】 Login cloud web, the verification code will display on the cloud storage interface, than copy it in the space.

Fill in the verification code, click on the "Bind" after the success. "User name", "Total Capacity" and "Used Capacity" that information will be automatically displayed.

⑥ Other

In the main interface, click "Configure → Network → Advanced Setup → Other" to enter the Video Password Authentication interface, as shown in Figure 7-19 below:



Figure 7-19

Here, the video password authentication is enabled. All devices connected to the camera, the platform in the connection IPC, you must enter the IPC user name and password in order to properly connect.

⑦ Wifi

In the main interface, click "Configure → Network → Advanced Setup → Wifi" to enter the WIFI configuration interface. Here you can configure the camera to connect the WiFi to the camera, as shown in Figure 7-20 below:

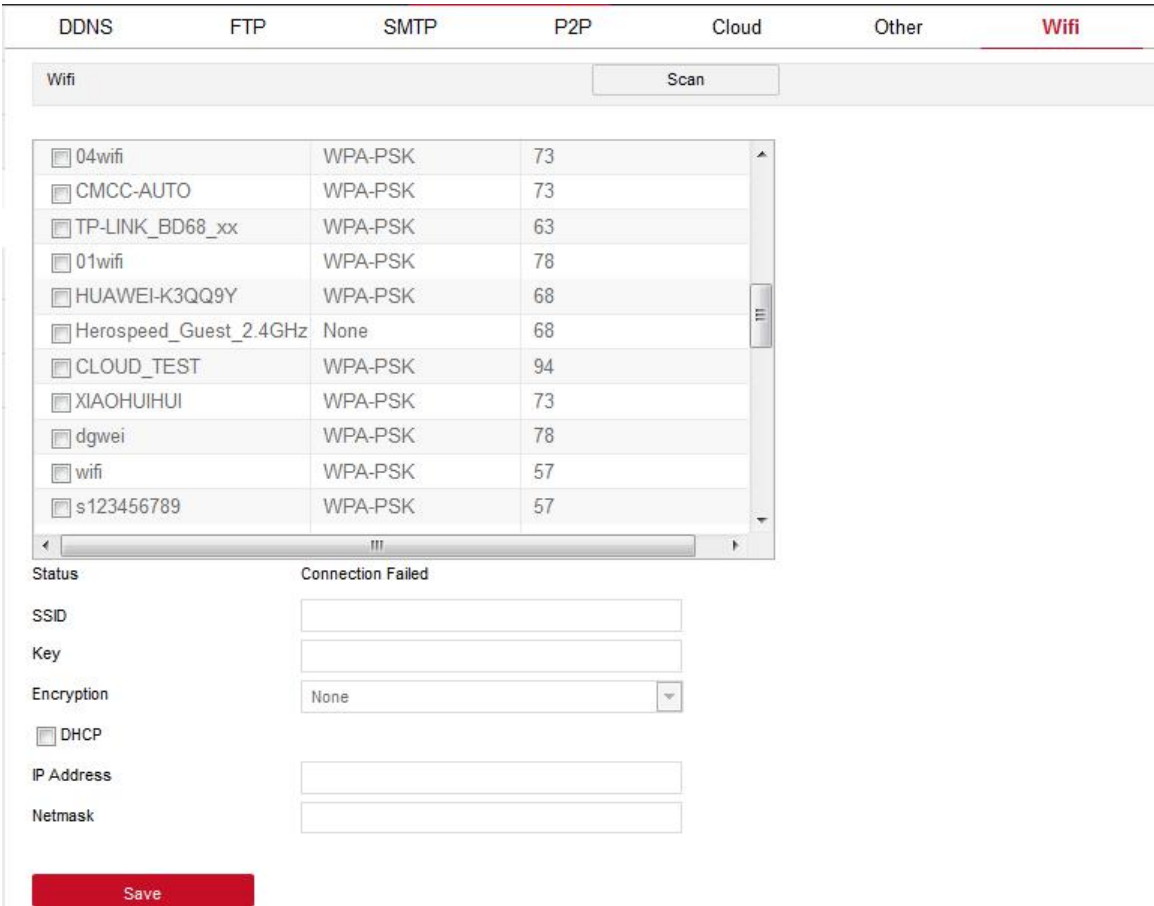


Figure 7-20

IPC WIFI configuration steps are as follows:

- Step 1:** Click the "Scan" button to search for nearby WiFi hotspots;
- Step 2:** Select to connect WiFi, enter the WiFi password;
- Step 3:** Turn on "Enable DHCP" and click "Save".



Note:

- Normal camera without Wifi configuration interface, please take the specific function of the specific camera.
- Also can not open the DHCP, manual input and choose the same WiFi network segment of the preferred DNS server IP address, default gateway, set the camera WiFi network information.

7.4 Video

In the main interface, click "Configure → Video" to enter the video and audio configuration interface, where you can set the device video, audio and other functions.

7.4.1 Video

In the main interface click "configuration → video → video" into the video configuration interface, where you can set the IPC device name, stream type, encoding and other video parameters, as shown in Figure 7-21:



Video

Device Name:

StreamType:

Codec:

	Stream1	Stream2	Stream3
Framerate	<input type="text" value="25"/> fps		
Bit Rate	<input type="text" value="3072"/> Kbps		
Rate Control	<input type="text" value="VBR"/>		
I-Frame Interval	<input type="text" value="1"/> s		
Profile	<input type="text" value="Main Profile"/>		

Figure 7-21

【Device Name】 Setting your camera name.

【Stream Type】 Here Single/Third available.

【Codec】 Choose coding and resolution.

【Framerate】 Set the frame rate of the current output video of the device.

【Bit Rate】 Support 64-12000kbps. The higher the bit rates the better video quality, but it occupy the greater network bandwidth and the greater the pressure transmission.

【Variable (fixed) code rate】 Switch the code rate output mode in the drop-down menu, fixed rate and variable rate.

【I Frame Interval】 IPC acquisition keyframe interval, can be set 1-5s.

【Profile】 Default is the Main Profile, you can select Baseline Profile or High Profile.



Note:

- Different IPC, device stream type, encoding, frame rate and other information in the drop-down menu options are also different.
- When the frame rate is set too low, it will cause video cardton, please be careful.
- The higher the bit rate, the greater the current network bandwidth and the greater the transmission pressure.

7.4.2 Audio

In the main interface, click "Configure → Video → Audio" to enter the audio configuration interface, where you can set the device audio input mode, select the audio code, set the input volume, as shown in Figure 7-22:

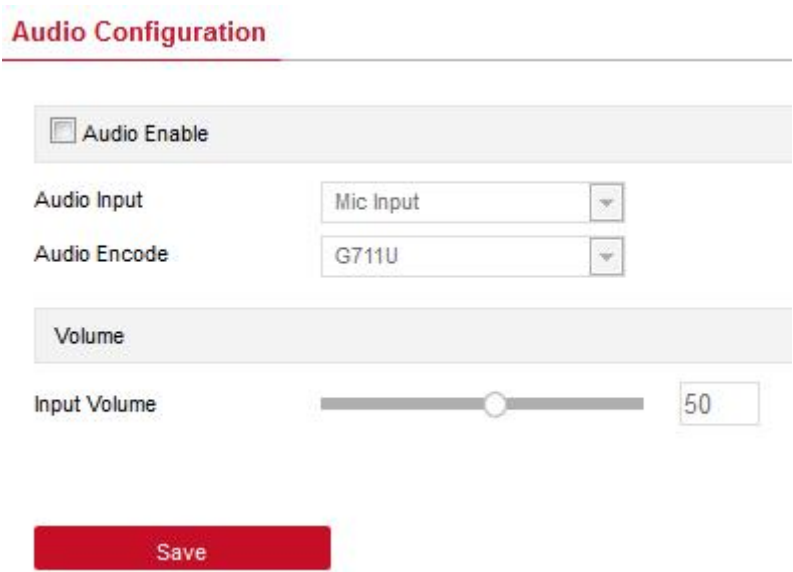


Figure 7-22

7.5 Image

In the main interface, click "Configuration → Image" to enter the image configuration interface, where you can set the device image and OSD text and other information.

7.5.1 Image

In the main interface, click "Configuration → Image → Image" to enter the image configuration interface, where you can adjust the related image parameters such as device image, IRcut, exposure, white balance, as shown in Figure 7-23:

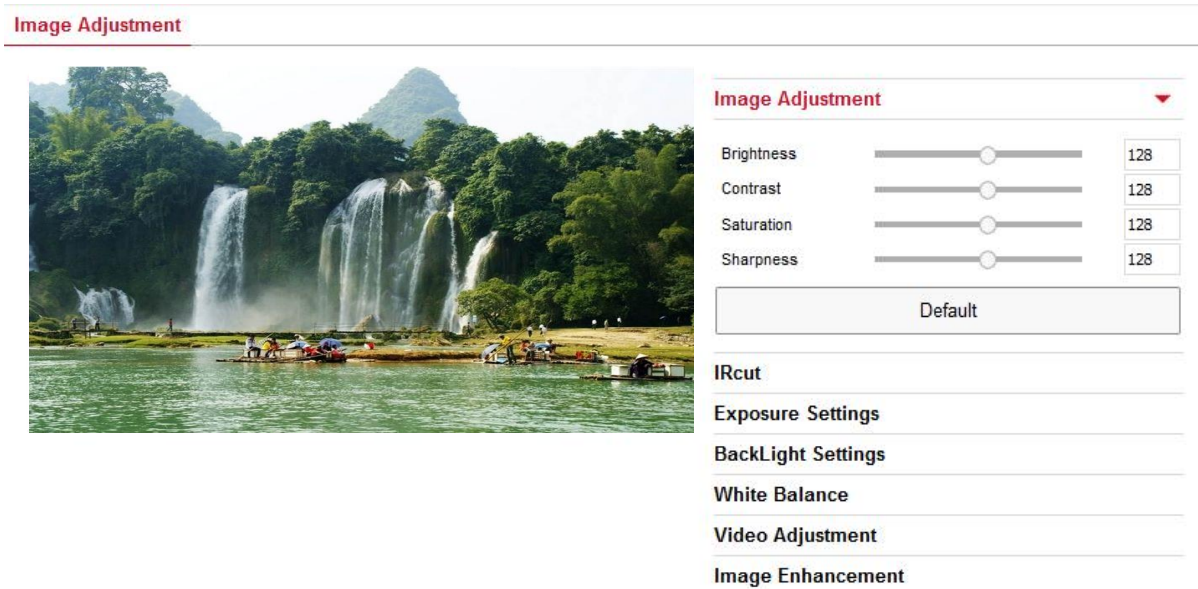


Figure 7-23

【 Brightness/Contrast/Saturation/Sharpness 】 You can input the value manually to set brightness, contrast, saturation, sharpness. These parameters shall be set according to the actual environment. The scope of valid values is from 0 to 255, you can drag the slider

to set, and the default value is 128.

Image Adjustment

Brightness

128

Contrast

128

Saturation

128

Sharpness

128

Figure 7-24

【IRcut】 Used to switch IRcut conversion time and set IRcut switch mode. Switch the IRcut conversion time, and the 2-10S option in the drop-down menu. IRcut mode defaults to LDR Auto, drop-down menu with Video Auto, Color, B/W options. As shown in Figure 7-25:

IRcut

Ircut Filter Time

3

Ircut Mode

LDR Auto

Figure 7-25

【Exposure Settings】 The default is automatic exposure, according to the actual need to switch the manual exposure mode, select "manual", the electronic shutter and gain adjustment is activated, click [Save]. As shown in Figure 7-26:

Exposure Settings

Exposure Settings

Auto

Manual

Exposure Time

1/25

Gain Control

128

Figure 7-26

【White Balance】 Default auto, switchable Manual, Fluorescent Lamp, Incandescent, Warm Light, Natural Light. As shown in Figure 7-27:

White Balance

White Balance

Auto

Red Gain

128

Green Gain

128

Blue Gain

128

Figure 7-27



- Manual white balance, support R, G, B gain adjustable, adjust the range (0-255), set the click **【Save】**.
- Fluorescent lamp for 6500K or so color temperature environment.
- Incandescent lamp for 3000K color temperature environment.
- The warm light is suitable for the color temperature environment around 4000K.
- Natural light for 5500K or so color temperature environment.

**Note:**

- The actual configuration interface, please specify the specific model.
【Video Adjustment】 Here you can set 2D or 3D digital noise reduction, as shown in Figure 7-28:



Figure 7-28

**Note:**

- The actual configuration interface, please specify the specific model.
【Image Enhancement】 Including flicker control, wide dynamic switch, HDR, as shown in Figure 7-29:



Figure 7-29

Flicker Control : The flash mode is selected according to the camera installation environment and the flicker standard; normally 50 Hz for PAL standard and 60 Hz for NTSC Standard, when the equipment is installed outdoors, you can choose outdoor.

WDR: Default Shut Down, you can switch in the drop-down menu automatically, Weak, Moderate, Strong, Super.

HDR: The default is off and can be turned on in the drop-down menu.

【Defog Model】 Used to set the de-fog mode and strength, as shown in Figure 7-30 below:

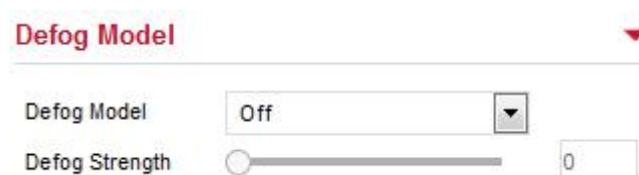


Figure 7-30

Defog Model: The default is off, you can choose from the drop-down menu to open or automatically.

Defog Strength: The default is 0, when the fog mode is open, you can set the fog strength, can be set to a value range of 0-255.

7.5.2 OSD

In the main interface, click "Configuration → Image → OSD" to enter the OSD configuration interface, where you can set the preview interface to display menu time, OSD text and other information, as shown in Figure 7-31:

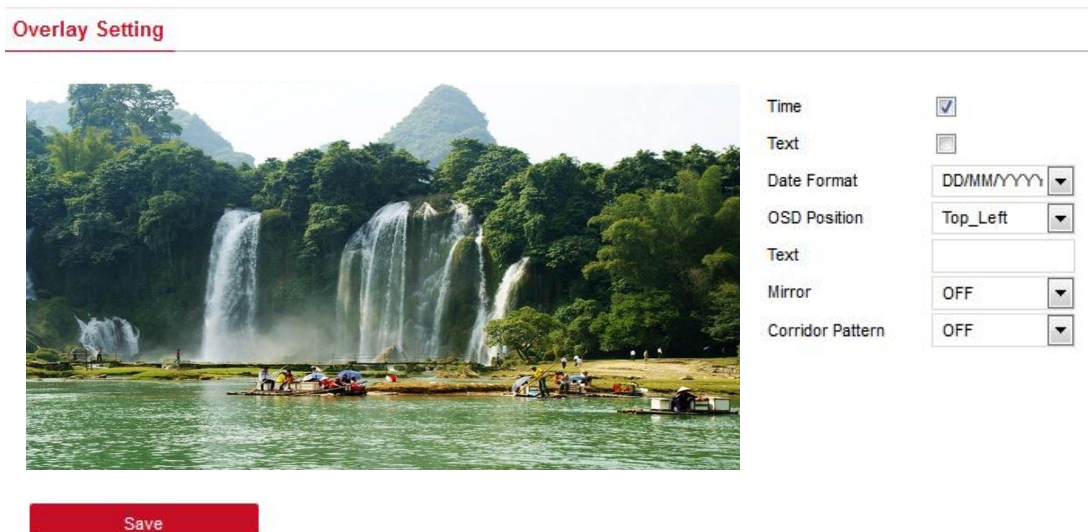


Figure 7-31

【Time】 Turn on / off the preview interface time display.

【Text】 Turn on / off the preview interface OSD text display.

【Date Format】 Set the preview interface to display the date format, default day / month / year, switchable month / day / year and year / month / day options.

【OSD Position】 Set the preview interface to display the time or OSD text position, the default is the Top_Left, you can switch the Bottom_Left.

【Text】 Enter the preview interface to display text information, such as hall elevator, hall door and other equipment location information.

【Mirror】 The default is OFF, you can switch VERTICAL, HORIZONTAL, BOTH, when the device video image is reversed, through the menu to flip the image.

7.6 Events

In the main interface, click "Configuration → Events" to enter the event configuration interface, where you can set the device's motion detection alarm, privacy mask, block alarm, exception and other events.

① Motion Detection

In the main interface click on the "Configuration → Events → Motion Detection" to enter the motion detection settings interface, where you can set the motion detection alarm area, arming time, linkage mode and other related parameters, as shown in Figure 7-32:

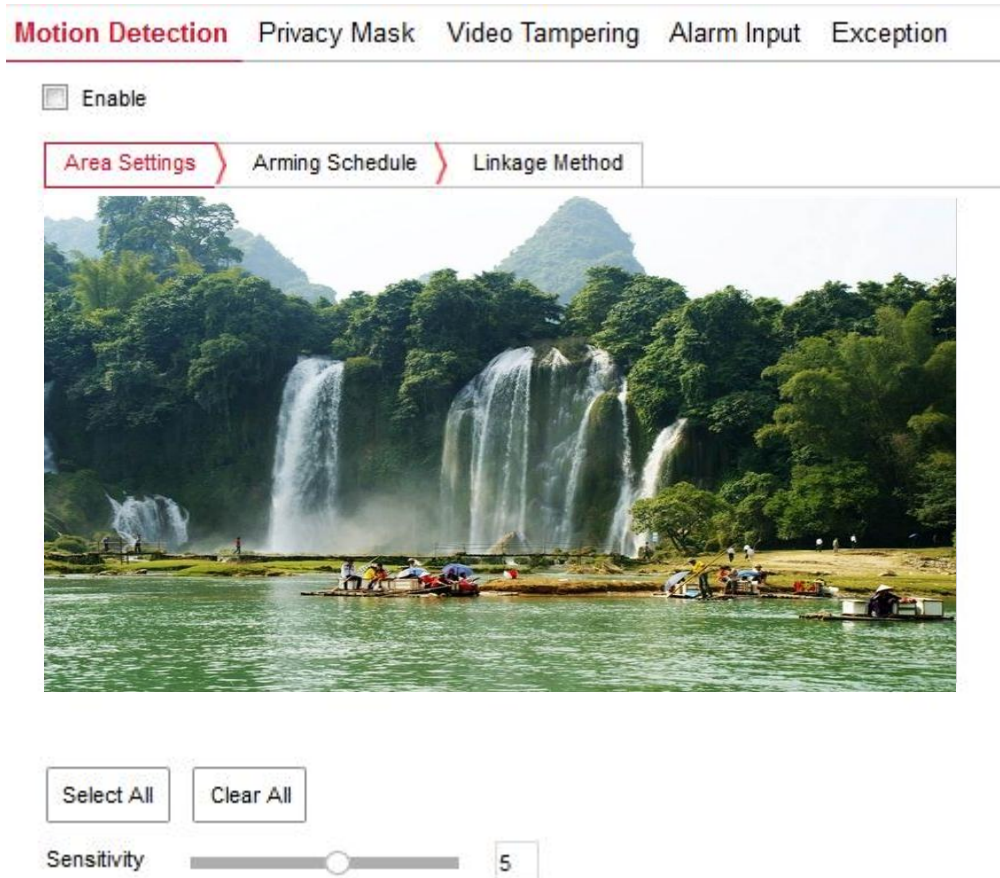


Figure 7-32

【Enable】 Turn on / off device motion detection alarm.

Area Settings: Select the area to set the motion detection sensitivity.

【 Select All 】 Motion detection range to monitor all of the area, which Consists of 396(22*18) small squares.

【 Manually draw the alarm area 】 Move the mouse to the preview screen, click the left mouse button to select the range of motion detection, release the left mouse button to complete the alarm area selection. A camera can select multiple motion detection zones at the same time.

【Clear All】 Clearing all the motion detecting area that selected currently.

【Sensitivity】 The default is 5, can switch the range of 0-10, the greater the value of the more sensitive equipment alarm.

Arming Schedule : As shown in Figure 7-33, you can view, edit, delete the motion detection of the deployment time, the default for all-day deployment, can be adjusted by the following way to adjust the deployment of mobile detection time:

- Method 1: Click the arming time period, manually fill in the start time and end time, set up and click Save. If you need to delete the time period, click the "Delete" button and then reset the time period.
- Method 2: Click the time of deployment, the time period will display two circles at both ends, the mouse moves to the circle, will show the left and right direction of the adjustment arrow, and move the adjustment arrow to adjust the arming time.
- You can set up more than one time period for up to 8 time periods.

- After the day of deployment time is set, if the other time also need to set the same arming time, click the right side of the timeline "📄" copy button, in the "copy to" interface check the "Select All" or a day, then Click "OK".
- After setting, click "Save" to complete the deployment time of the motion detection configuration.

Figure 7-33

**Note:**

- When the arming time is set, there can be no overlap between any two time periods.

Linkage Method: When the motion detection to open the alarm linkage, there are a variety of alarm linkage, linkage, including conventional linkage, linkage alarm output, as shown in Figure 7-34:

【General Linkage】Including uploading SMTP, uploading FTP, uploading cloud and SD card record.

【Upload Via SMTP】Select and the system is configured with SMTP, the alarm information will be sent to the SMTP recipient mailbox.

【Upload Via FTP】Select and the system is configured with the FTP server, will send the alarm information to the FTP server.

【Upload Via Cloud】Select and the system is configured with the cloud server, will send the alarm information to the cloud account.

【Record Via SDcard】Select and configure the system video, the alarm will record the alarm video to the IPC SD card.

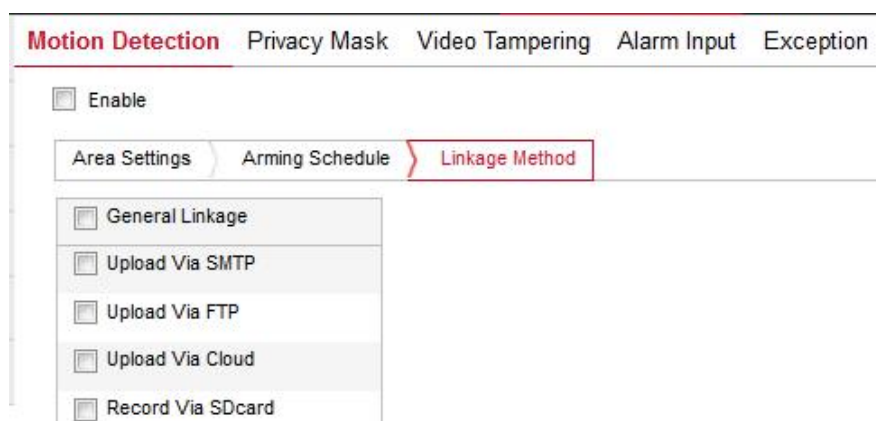


Figure 7-34

Open the "General linkage", "upload Via SMTP", "upload Via FTP", "upload Via Cloud", "Record Via SDcard" function, when the device motion detection alarm, the linkage corresponding way to inform the user.

② Privacy Mask

In the main interface, click "Configuration → Event → Privacy" to enter the privacy mask settings interface. As shown in Figure 7-35:

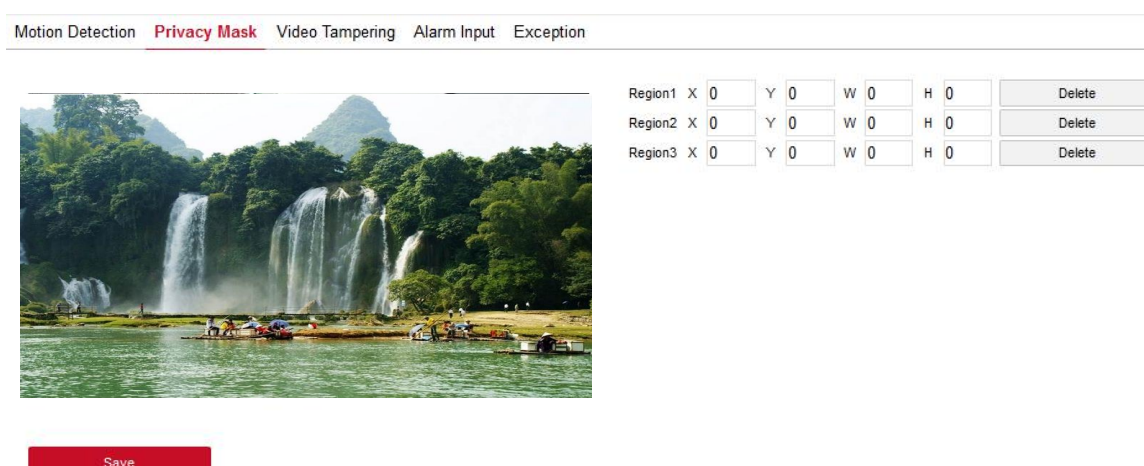


Figure 7-35

Here you can choose up to 3 occlusion areas. Hold down the left mouse button and drag to select the area in the area. Region 1、Region 2、Region 3 bellow will show the corresponding coordinates, width, and height of the region. If you want to delete a region, click on the corresponding "Delete" button. Click on the "Save" after completing the setting.

③ Video Tampering

In the main interface click on the "configuration → Events → Video Tampering" to enter the video tampering settings interface. As shown in Figure 7-36:

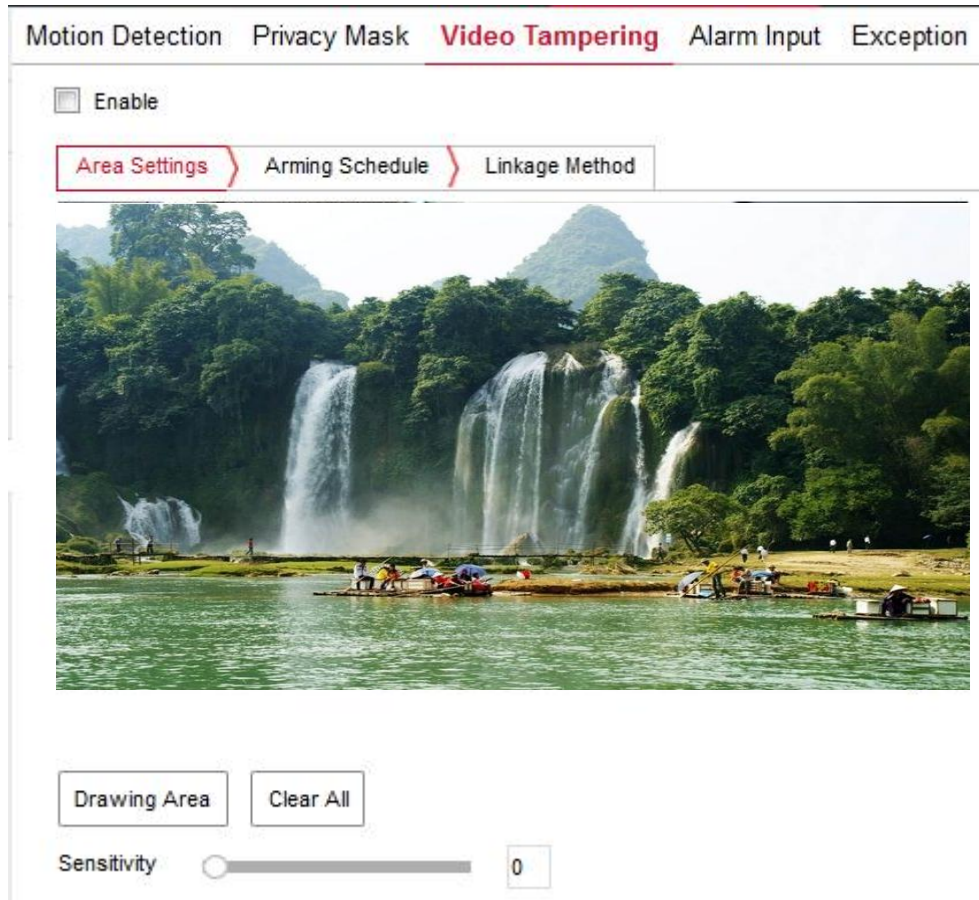


Figure 7-36

【Enable】 Turn on / off device video tampering alarm.

Area Settings: Select the area to set the video tampering sensitivity.


【Drawing Area / Stop Drawing】 Move the mouse to the preview screen, click the left mouse button to select the range of motion detection, release the left mouse button, click "Stop Drawing" to complete the alarm area selection.

【Clear All】 Clearing all the video tampering area that selected currently.

【Sensitivity】 The default is 0, can switch the range of 0-2, the greater the value of the more sensitive equipment alarm.

Arming Schedule : As shown in Figure 7-37, you can view, edit, delete the video tampering of the deployment time, default all day 0 arming, can be adjusted by the following way to adjust the deployment of video tampering time:

- Method 1: In the arming time period, hold down the left mouse button to drag the mouse to the right to select the time period.
- Method 2: Click the arming time period, manually fill in the start time and end time, set up and click Save after setting. If you need to delete the time period, click the "Delete" button and then reset the time period.
- Method 3: Click the time of deployment, the time period will display two circles at both ends, the mouse moves to the circle, will show the left and right direction of the adjustment arrow, and move the adjustment arrow to adjust the arming time.

- You can set up more than one time period for up to 8 time periods.
- After the day of deployment time is set, if the other time also need to set the same arming time, click the right side of the timeline "  " copy button, in the "copy to" interface check the "Select All" or a day, then Click "OK".
- After setting, click "Save" to complete the deployment time of the motion detection configurat.

Motion Detection Privacy Mask **Video Tampering** Alarm Input Exception

☐ Enable

Area Settings **Arming Schedule** Linkage Method

☒ Delete ☒ Del All ☒ Select All

	0	2	4	6	8	10	12	14	16	18	20	22	24
Mon													
Tue													
Wed													
Thu													
Fri													
Sat													
Sun													

Figure 7-37

**Note:**

- When the arming time is set, there can be no overlap between any two time periods.

Linkage Method: Alarm linkage mode upload SMTP and upload FTP regular linkage, as shown in Figure 7-38:

【General Linkage】Including uploading SMTP and uploading FTP.

【Upload Via SMTP】Select and the system is configured with SMTP, the alarm information will be sent to the SMTP recipient mailbox.

【Upload Via FTP】Select and the system is configured with the FTP server, will send the alarm information to the FTP server.

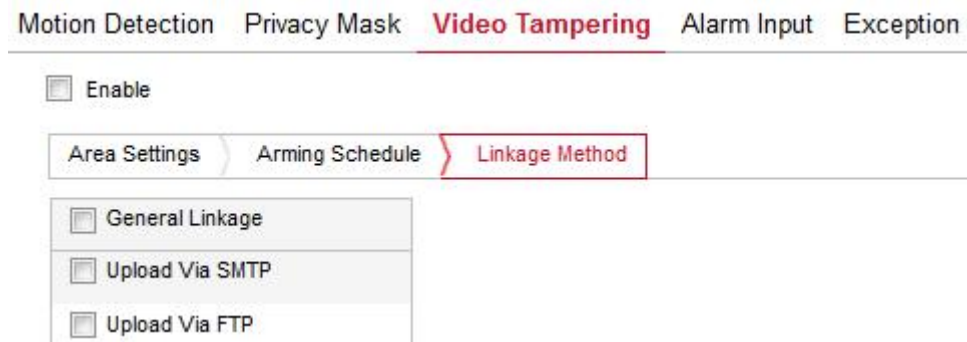



Figure 7-38

Here to open the "regular linkage", "upload FTP", "upload SMTP" function, when the device settings area is blocked and alarm, the corresponding way to inform the user.

④ Alarm Input

In the main interface click on the "configuration → Events → Alarm Input" to enter the Arming Schedule settings interface.

Arming Schedule : As shown in Figure 7-39, you can view, edit, delete the video tempering of the deployment time, default all day 0 arming, can be adjusted by the following way to adjust the deployment of alarm input time:

- Method 1: In the arming time period, hold down the left mouse button to drag the mouse to the right to select the time period.
- Method 2: Click the arming time period, manually fill in the start time and end time, set up and click Save after setting. If you need to delete the time period, click the "Delete" button and then reset the time period.
- Method 3: Click the time of deployment, the time period will display two circles at both ends, the mouse moves to the circle, will show the left and right direction of the adjustment arrow, and move the adjustment arrow to adjust the arming time.
- You can set up more than one time period for up to 8 time periods.
- After the day of deployment time is set, if the other time also need to set the same arming time, click the right side of the timeline "  " copy button, in the "copy to" interface check the "Select All" or a day, then Click "OK".
- After setting, click "Save" to complete the deployment time of the motion detection configurat.

Motion Detection Privacy Mask Video Tampering **Alarm Input** Exception

Arming Schedule Linkage Method

☒ Delete ☒ Del All ☒ Select All

Mon	0	2	4	6	8	10	12	14	16	18	20	22	24
Tue	0	2	4	6	8	10	12	14	16	18	20	22	24
Wed	0	2	4	6	8	10	12	14	16	18	20	22	24
Thu	0	2	4	6	8	10	12	14	16	18	20	22	24
Fri	0	2	4	6	8	10	12	14	16	18	20	22	24
Sat	0	2	4	6	8	10	12	14	16	18	20	22	24
Sun	0	2	4	6	8	10	12	14	16	18	20	22	24

Figure 7-39

Linkage mode settings: Alarm linkage, including upload SMTP and FTP upload the normal linkage and IO output of the linkage alarm output, as shown in Figure 7-40:

【Regular linkage】 Including upload SMTP and upload FTP.

【Upload Via SMTP】 Select and the system is configured with SMTP, the alarm information will be sent to the SMTP recipient mailbox.

【Upload Via FTP】 Select and the system is configured with the FTP server, will send the alarm information to the FTP server.

【Linkage Alarm Output】 Including IO output.

【IO Output】 Be enabled and the device IO port is connected to the output alarm device. When there is alarm input, the alarm device connected with IO port will make the corresponding alarm action.

Motion Detection Privacy Mask Video Tampering **Alarm Input** Exception

Arming Schedule Linkage Method

<input type="checkbox"/> General Linkage	<input type="checkbox"/> Linkage Alarm Output
<input type="checkbox"/> Upload Via SMTP	<input type="checkbox"/> IO Output
<input type="checkbox"/> Upload Via FTP	

Figure 7-40

④ Exception

In the main interface, click "Configuration → Event → Except" to enter the exception settings interface. As shown in Figure 7-41:

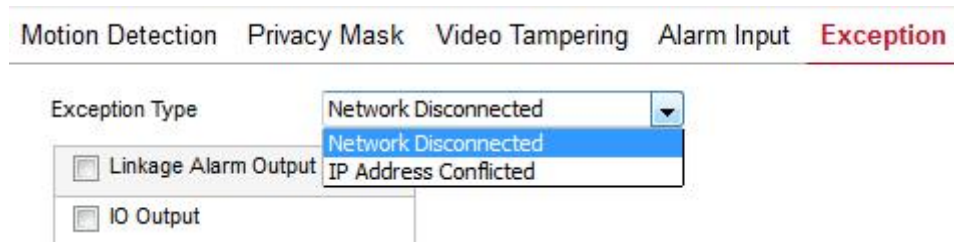


Figure 7-41

Set the "Cable Disconnection" and "IP Address Conflict" alarms here, and set the alarm output mode. Click on the "Save" after completing the settings.

Chapter 8 App client

8.1 Installation & Register

FreeIP process: register→login→add device→service application

Step 1 For your mobile phone, please scan the corresponding QR code as shown in Figure 8-1, download and install "FreeIP" in your mobile phone. You can also log on to the "FreeIP" official website www.freeip.com, or the following application store to download and install the app directly.

Android application downloads address:

<https://play.google.com/store/apps/details?id=com.xc.hdscreen>

iOS application downloads address:

<https://itunes.apple.com/cn/app/freeip/id898690336?mt=8>

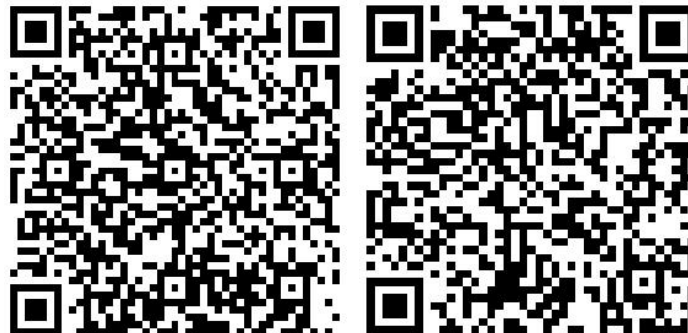


Figure 8-1 Android

iOS



Note:

- The mobile client currently only supports iOS and Android systems.
- iOS users directly in the App Store search "FreeIP", to download and install.

Step 2 After installation, run "FreeIP", register an account according to the interface prompts.

8.2 Add device

Step 1: Make sure that IPC is connected to the internet, P2P is on, and is online.

Step 2: Set up the phone network; connect the phone to the wireless network.

Step 3: Log into the mobile client and select “Device” from the sliding sidebar. The sliding sidebar is shown in Figure 8-2.

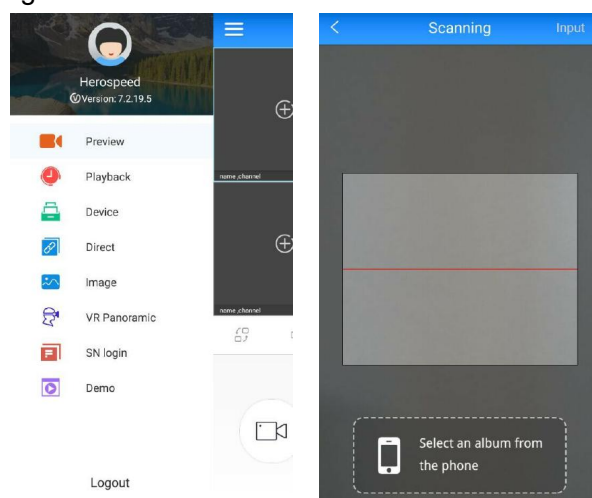


Figure 8-2

Click “+” in the upper right corner, then scan the QR code on the device or in the P2P interface, as show in Figure 8-3.

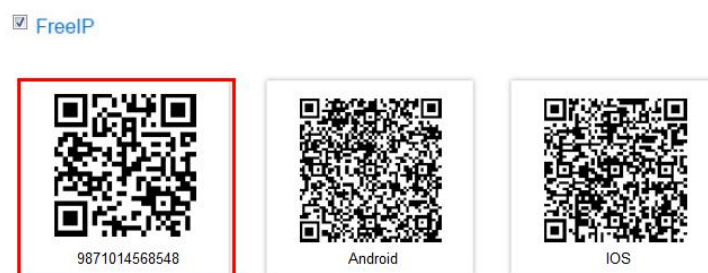


Figure 8-3

Step 4 The phone will automatically recognize the QR code, enter the IPC user name and password, click “Submit”, then set the camera note and the camera groups, after clicking ”Send”, prompt “Add successful” will show up.

8.3 Live Preview

Step 1 Select “Preview” from the App toolbar, then comes to the preview interface, as Figure 8-4.

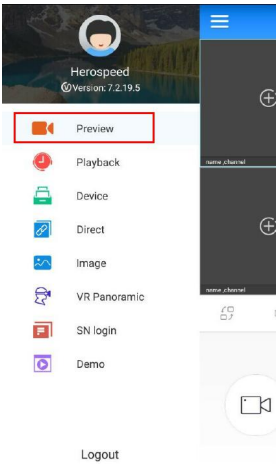


Figure 8-4

Step 2 Click “+” in the preview window as shown in Figure 8-5.

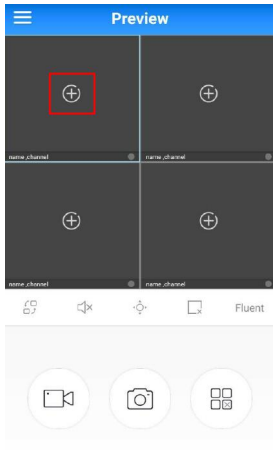


Figure 8-5

Step 3 Select the device preview channel in the device list group, then click “Preview” as shown in Figure 8-6.

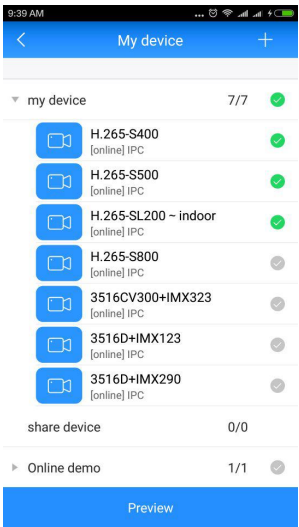


Figure 8-6

Step 4 In the preview interface, you can choose multi-screen preview mode, as shown in

Figure 8-7.

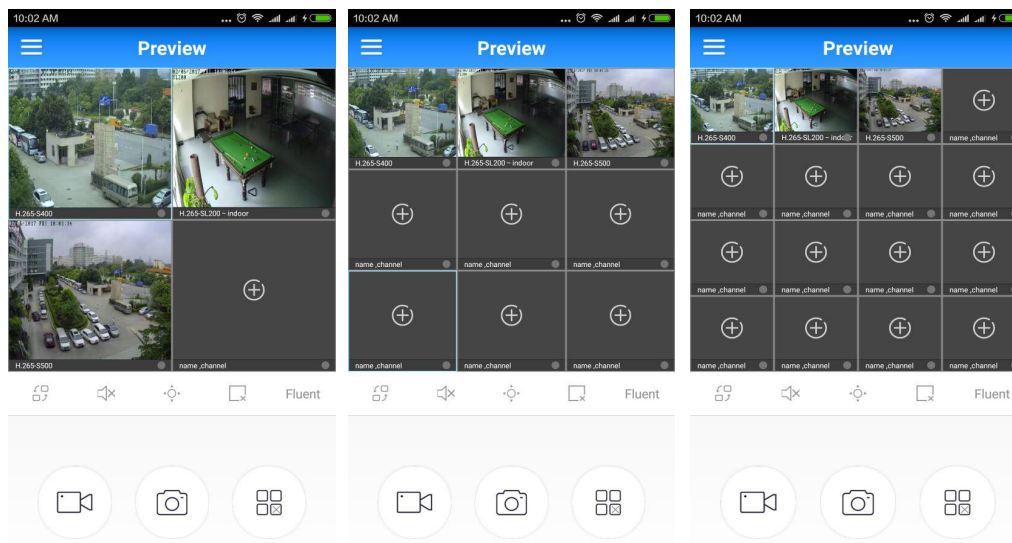


Figure 8-7

Phone full-screen preview as shown in Figure 8-8.

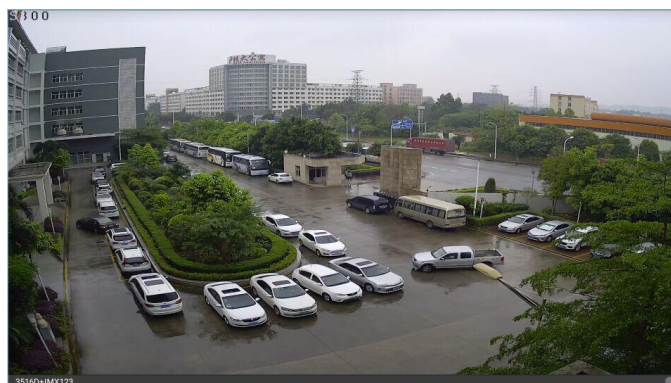


Figure 8-8



Note:

- In the real-time preview interface in addition to switch preview mode, you can also do video, capture, set the sound and other operations, if the channel has PTZ function, but also do control PTZ, focus and other actions.

8.4 Playback

FreIP app playback is used to play back images recorded in the IPC SD card and recorded on the NVR hard disk.

Step 1 Select “Playback” from the App toolbar, then comes to the video playback interface, as Figure 8-9.

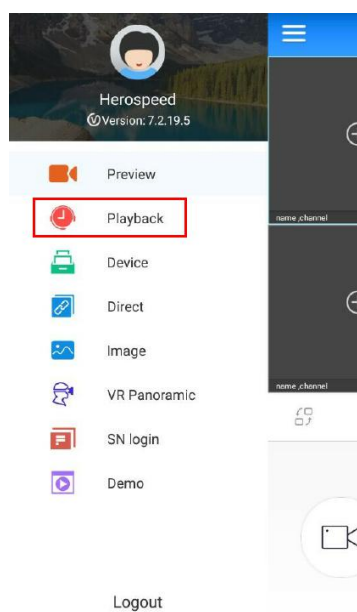


Figure 8-9

Step 2 Click "+" in the preview window, as shown in Figure 8-10.

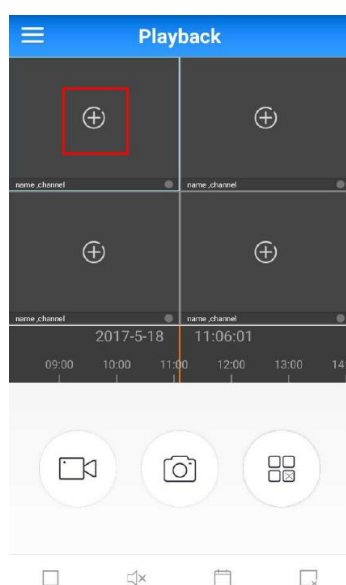


Figure 8-10

Step 3 Select the device playback channel in the device list group, then click "Playback " as shown in Figure 8-11.

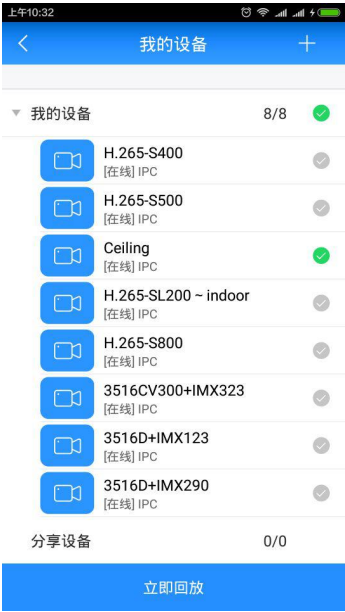


Figure 8-11

Step 4 The recording of the playback device is shown in Figure 8-12.

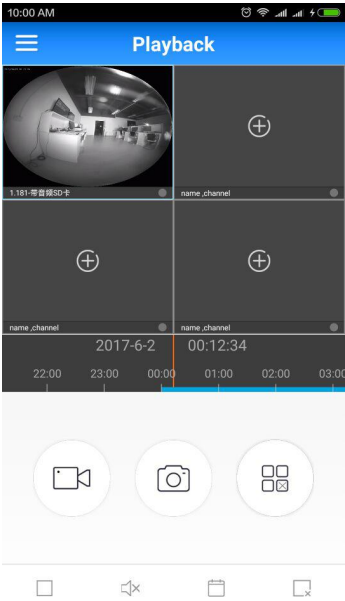


Figure 8-12



Note:

- In the playback interface in addition to switch preview mode, you can also do video, capture, set the sound and other operations.

Chapter 9 Frequently Asked Questions

1. Why can not access the camera by IE?

Answer: There maybe 4 reasons, Details are as follows:

a. The network unreasonable?

Solution: First you can connect network by PC, check the network cable if it is good. And check the network between the camera and the PC is good.

b. The IP address of the camera is occupied by other device or PC?

Solution: You can connect the camera with your PC directly, and modify the IP address or use the IP search tool.

c. The camera maybe in other network segment?

Solution: Check the IP address and net mask.

2. Why can not access the camera after update?

Answer: Clean browser cache.

Step: open IE, click "Tools" and select "Internet Options", then you can see "Temporary Internet files" and click "Delete Files", it will prompt a dialog you need to check "Delete all offline content" and click "OK".

Also you can click "Start" and select "Run" then enter "cmd", enter "arp -d" in "Command Prompt" interface. Re-access the camera.

3. Why cannot show the whole interface?

Answer: Close some options of IE.

Step: Open IE, click "View" and select "Toolbar", close the "Favorites bar", "Status bar" and "Command bar".